

SLC1A5 Antibody

Catalog No: #37032

Orders: order@signalwayantibody.comSupport: tech@signalwayantibody.com

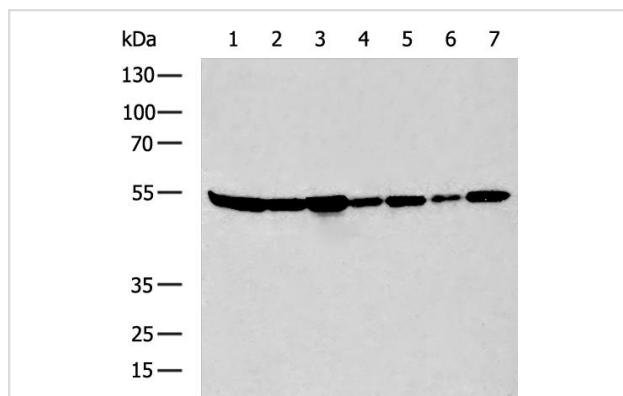
Description

Product Name	SLC1A5 Antibody
Host Species	Rabbit
Clonality	Polyclonal
Purification	Antigen affinity purification.
Applications	WB
Species Reactivity	Human
Specificity	The antibody detects endogenous levels of total SLC1A5 protein.
Immunogen Type	Peptide
Immunogen Description	Synthetic peptide of human SLC1A5
Target Name	SLC1A5
Other Names	R16; AAAT; ATBO; M7V1; RDRC; ASCT2; M7VS1
Accession No.	Swiss-Prot#: Q15758NCBI Gene ID: 6510Gene Accssion: NP_005619
Uniprot	Q15758
GeneID	6510;
SDS-PAGE MW	57kd
Concentration	1.2mg/ml
Formulation	Rabbit IgG in pH7.4 PBS, 0.05% NaN ₃ , 40% Glycerol.
Storage	Store at -20°C

Application Details

WB 1:1000-5000

Images



Gel: 8%SDS-PAGE

Lysate: 40 ug

Lane 1-7: HeLa, 293T, Jurkat, NCI-H1975, HepG2,U251, MCF7 cell lysates

Primary antibody: (SLC1A5 Antibody) at dilution 1/1000

Secondary antibody: (HRP-conjugated Goat anti rabbit IgG) at 1/5000 dilution

Exposure time: 10 seconds

Background

Neutral amino acid transporter B(0) is a protein that in humans is encoded by the SLC1A5 gene. Has a broad substrate specificity, a preference for zwitterionic amino acids, and a sodium-dependence. It accepts as substrates all neutral amino acids, including glutamine, asparagine, and

branched-chain and aromatic amino acids, and excludes methylated amino acids, anionic amino acids, and cationic amino acids. Acts as a cell surface receptor for feline endogenous virus RD114, baboon M7 endogenous virus and type D simian retroviruses.

Note: This product is for in vitro research use only