

PSPN Antibody

Catalog No: #37041

Orders: order@signalwayantibody.comSupport: tech@signalwayantibody.com

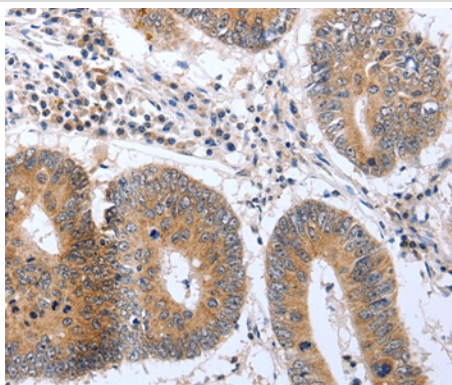
Description

Product Name	PSPN Antibody
Host Species	Rabbit
Clonality	Polyclonal
Purification	Antigen affinity purification.
Applications	IHC
Species Reactivity	Hu
Specificity	The antibody detects endogenous levels of total PSPN protein.
Immunogen Type	Peptide
Immunogen Description	Synthetic peptide corresponding to a region derived from internal residues of human persephin
Target Name	PSPN
Other Names	PSP
Accession No.	Swiss-Prot#: O60542 NCBI Gene ID: 5623Gene Accssion: NP_004149.1
Uniprot	O60542
GeneID	5623;
Concentration	0.8mg/ml
Formulation	Rabbit IgG in pH7.4 PBS, 0.05% NaN ₃ , 40% Glycerol.
Storage	Store at -20°C

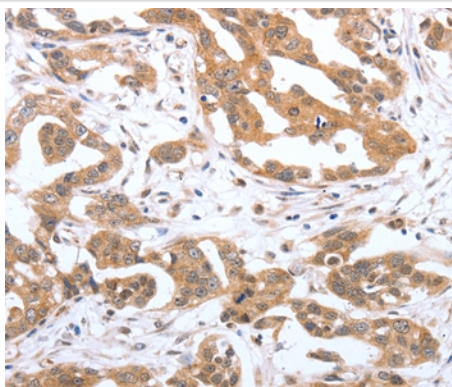
Application Details

Immunohistochemistry: 1:25-1:100

Images



Immunohistochemical analysis of paraffin-embedded Human ovarian cancer tissue using #37041 at dilution 1/25.



Immunohistochemical analysis of paraffin-embedded Human colon cancer tissue using #37041 at dilution 1/25.

Background

The protein encoded by this gene is a neurotrophic factor, belonging to the GDNF family. Neurotrophic factors are important for the proper development and maintenance of the nervous system. These factors promote neuronal survival and can prevent the neuronal degeneration associated with injury, toxin exposure, or neurodegenerative disease. The encoded protein has amino acid similarity to its other family members, glial cell line-derived neurotrophic factor and neurturin. This gene product promotes the survival of ventral midbrain dopaminergic neurons in culture and prevents their degeneration after 6-hydroxydopamine treatment in vivo.

Note: This product is for in vitro research use only