

CKLFSF5 antibody

Catalog No: #22184

Orders: order@signalwayantibody.com

Support: tech@signalwayantibody.com

Description

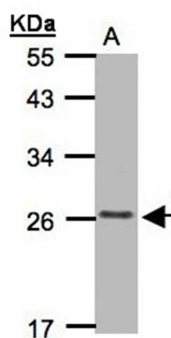
Product Name	CKLFSF5 antibody
Host Species	Rabbit
Clonality	Polyclonal
Purification	Purified by antigen-affinity chromatography.
Applications	WB
Species Reactivity	Hu
Immunogen Type	Peptide
Immunogen Description	Synthetic peptide contain a sequence corresponding to a region within amino acids 92 and 156 of Human CMTM5
Target Name	CKLFSF5
Other Names	CKLFSF5; FLJ37521
Accession No.	Swiss-Prot:Q96DZ9Gene ID:116173
Uniprot	Q96DZ9
GeneID	116173;
Concentration	1mg/ml
Formulation	Supplied in 0.1M Tris-buffered saline with 10% Glycerol (pH7.0). 0.01% Thimerosal was added as a preservative.
Storage	Store at -20°C for long term preservation (recommended). Store at 4°C for short term use.

Application Details

Predicted MW: 17kd

Western blotting: 1:500-1:3000

Images



Sample(30 ug of whole cell lysate)
 A: MOLT4 whole cell lysate
 12% SDS PAGE
 Primary antibody diluted at 1: 1000

Background

This gene belongs to the chemokine-like factor gene superfamily. This family of genes encodes multi-pass membrane proteins that are similar to both

the chemokine and the transmembrane 4 superfamilies of signaling molecules. Alternate transcriptional splice variants of this gene, encoding different isoforms, have been characterized. [provided by RefSeq]

Note: This product is for in vitro research use only