

AGAP1 Antibody

Catalog No: #37088

Orders: order@signalwayantibody.comSupport: tech@signalwayantibody.com

Description

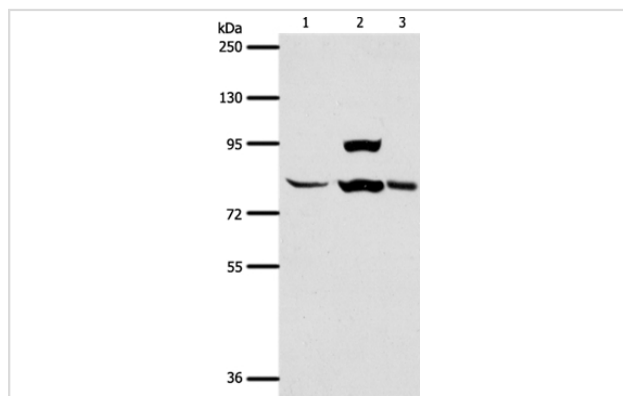
Product Name	AGAP1 Antibody
Host Species	Rabbit
Clonality	Polyclonal
Purification	Antigen affinity purification.
Applications	WB IHC
Species Reactivity	Hu Ms
Specificity	The antibody detects endogenous levels of total AGAP1 protein.
Immunogen Type	Peptide
Immunogen Description	Synthetic peptide corresponding to a region derived from internal residues of human ArfGAP with GTPase domain, ankyrin repeat and PH domain 1
Target Name	AGAP1
Other Names	GGAP1; AGAP-1; CENTG2; cnt-g2
Accession No.	Swiss-Prot#: Q9UPQ3NCBI Gene ID: 116987Gene Accssion: NP_001032208
Uniprot	Q9UPQ3
GeneID	116987;
SDS-PAGE MW	94/89kd
Concentration	0.8mg/ml
Formulation	Rabbit IgG in pH7.4 PBS, 0.05% NaN ₃ , 40% Glycerol.
Storage	Store at -20°C

Application Details

Western blotting: 1:500-1:2000

Immunohistochemistry: 1:25-1:100

Images



Gel: 8%SDS-PAGE

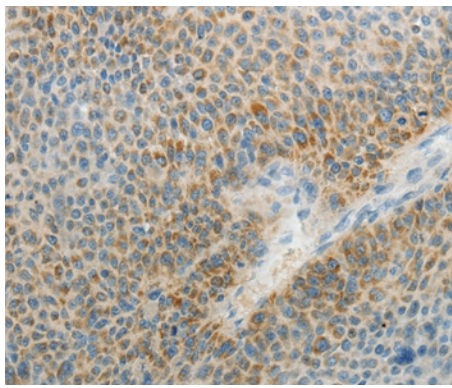
Lysates (from left to right): Human liver cancer tissue, hela cell and mouse lung tissue

Amount of lysate: 40ug per lane

Primary antibody: 1/400 dilution

Secondary antibody dilution: 1/8000

Exposure time: 1 minute



Immunohistochemical analysis of paraffin-embedded Human liver cancer tissue using #37088 at dilution 1/25.

Background

This gene encodes a member of an ADP-ribosylation factor GTPase-activating protein family involved in membrane trafficking and cytoskeleton dynamics. This gene functions as a direct regulator of the adaptor-related protein complex 3 on endosomes. Multiple transcript variants encoding different isoforms have been found for this gene. GTPase-activating protein for ARF1 and, to a lesser extent, ARF5. Directly and specifically regulates the adapter protein 3 (AP-3)-dependent trafficking of proteins in the endosomal-lysosomal system.

Note: This product is for in vitro research use only