

## AGBL1 Antibody

Catalog No: #37089

Orders: [order@signalwayantibody.com](mailto:order@signalwayantibody.com)Support: [tech@signalwayantibody.com](mailto:tech@signalwayantibody.com)

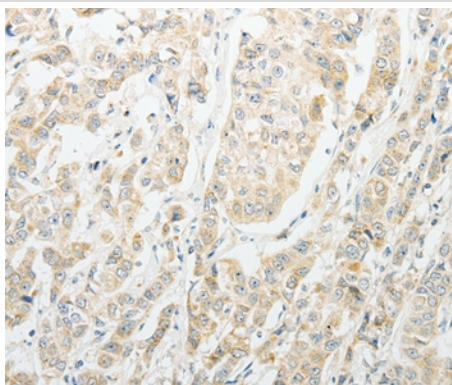
## Description

Product Name	AGBL1 Antibody
Host Species	Rabbit
Clonality	Polyclonal
Purification	Antigen affinity purification.
Applications	IHC
Species Reactivity	Hu Ms
Specificity	The antibody detects endogenous levels of total AGBL1 protein.
Immunogen Type	Peptide
Immunogen Description	Synthetic peptide corresponding to residues near the N terminal of human ATP/GTP binding protein-like 1
Target Name	AGBL1
Other Names	CBPC4; CCP4; FLJ32310; MGC149239
Accession No.	Swiss-Prot#: Q96MI9 NCBI Gene ID: 123624Gene Accssion: NP_689549
Uniprot	Q96MI9
GeneID	123624;
Concentration	0.5mg/ml
Formulation	Rabbit IgG in pH7.4 PBS, 0.05% NaN <sub>3</sub> , 40% Glycerol.
Storage	Store at -20°C

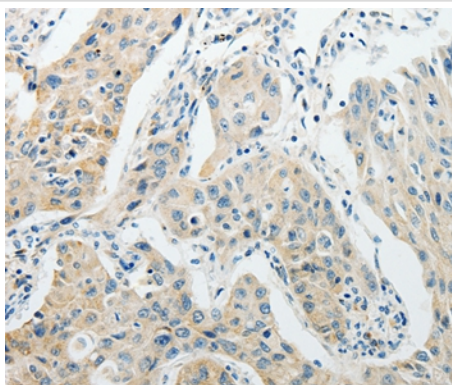
## Application Details

Immunohistochemistry: 1:15-1:50

## Images



Immunohistochemical analysis of paraffin-embedded Human breast cancer tissue using #37089 at dilution 1/15.



Immunohistochemical analysis of paraffin-embedded Human lung cancer tissue using #37089 at dilution 1/15.

## Background

Metalloprotease that mediates deglutamylation of target proteins. Catalyzes the deglutamylation of polyglutamate side chains generated by post-translational polyglutamylation in proteins such as tubulins. Also removes gene-encoded polyglutamates from the carboxy-terminus of target proteins such as MYLK. Acts as a long-chain deglutaminase and specifically shortens long polyglutamate chains, while it is not able to remove the branching point glutamate, a process catalyzed by AGL5/CCP5.

Note: This product is for in vitro research use only