

AGPAT2 Antibody

Catalog No: #37090

Orders: order@signalwayantibody.comSupport: tech@signalwayantibody.com

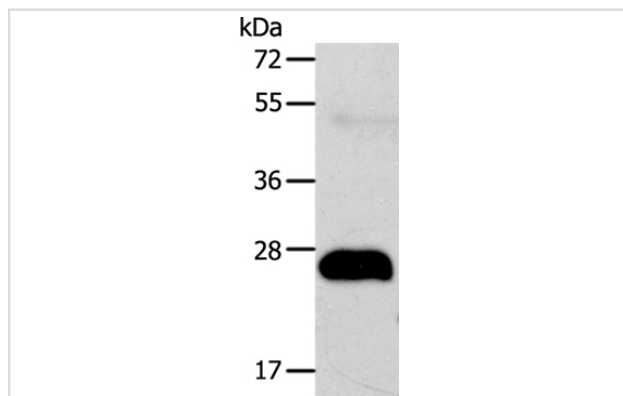
Description

Product Name	AGPAT2 Antibody
Host Species	Rabbit
Clonality	Polyclonal
Purification	Antigen affinity purification.
Applications	WB
Species Reactivity	Hu
Specificity	The antibody detects endogenous levels of total AGPAT2 protein.
Immunogen Type	Peptide
Immunogen Description	Synthetic peptide corresponding to residues near the C terminal of human 1-acylglycerol-3-phosphate O-acyltransferase 2
Target Name	AGPAT2
Other Names	BSCL; BSCL1; LPAAB; 1-AGPAT2; LPAAT-beta
Accession No.	Swiss-Prot#: O15120NCBI Gene ID: 10555Gene Accssion: NP_001012745
Uniprot	O15120
GeneID	10555;
SDS-PAGE MW	27kd
Concentration	0.8mg/ml
Formulation	Rabbit IgG in pH7.4 PBS, 0.05% NaN ₃ , 40% Glycerol.
Storage	Store at -20°C

Application Details

Western blotting: 1:500-1:2000

Images



Gel: 12%SDS-PAGE
 Lysates (from left to right): Human fetal liver cancer tissue
 Amount of lysate: 40ug per lane
 Primary antibody: 1/400 dilution
 Secondary antibody dilution: 1/8000
 Exposure time: 30 seconds

Background

This gene encodes a member of the 1-acylglycerol-3-phosphate O-acyltransferase family. The protein is located within the endoplasmic reticulum

membrane and converts lysophosphatidic acid to phosphatidic acid, the second step in de novo phospholipid biosynthesis. Mutations in this gene have been associated with congenital generalized lipodystrophy (CGL), or Berardinelli-Seip syndrome, a disease characterized by a near absence of adipose tissue and severe insulin resistance. Alternate transcriptional splice variants, encoding different isoforms, have been characterized.

Note: This product is for in vitro research use only