

AKAP6 Antibody

Catalog No: #37095

Orders: order@signalwayantibody.comSupport: tech@signalwayantibody.com

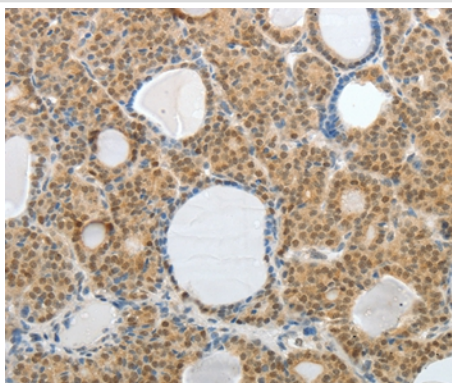
Description

Product Name	AKAP6 Antibody
Host Species	Rabbit
Clonality	Polyclonal
Purification	Antigen affinity purification.
Applications	IHC
Species Reactivity	Hu
Specificity	The antibody detects endogenous levels of total AKAP6 protein.
Immunogen Type	Peptide
Immunogen Description	Synthetic peptide corresponding to a region derived from internal residues of human A kinase (PRKA) anchor protein 6
Target Name	AKAP6
Other Names	ADAP6; PRKA6; mAKAP; ADAP100; AKAP100
Accession No.	Swiss-Prot#: Q13023NCBI Gene ID: 9472Gene Accssion: NP_004265
Uniprot	Q13023
GeneID	9472;
Concentration	1mg/ml
Formulation	Rabbit IgG in pH7.4 PBS, 0.05% NaN ₃ , 40% Glycerol.
Storage	Store at -20°C

Application Details

Immunohistochemistry: 1:50-1:200

Images



Immunohistochemical analysis of paraffin-embedded Human thyroid cancer tissue using #37095 at dilution 1/30.

Background

The A-kinase anchor proteins (AKAPs) are a group of structurally diverse proteins, which have the common function of binding to the regulatory subunit of protein kinase A (PKA) and confining the holoenzyme to discrete locations within the cell. This gene encodes a member of the AKAP family.

The encoded protein is highly expressed in various brain regions and cardiac and skeletal muscle. It is specifically localized to the sarcoplasmic reticulum and nuclear membrane, and is involved in anchoring PKA to the nuclear membrane or sarcoplasmic reticulum.

Note: This product is for in vitro research use only