

## AMD1 Antibody

Catalog No: #37098

Orders: [order@signalwayantibody.com](mailto:order@signalwayantibody.com)Support: [tech@signalwayantibody.com](mailto:tech@signalwayantibody.com)

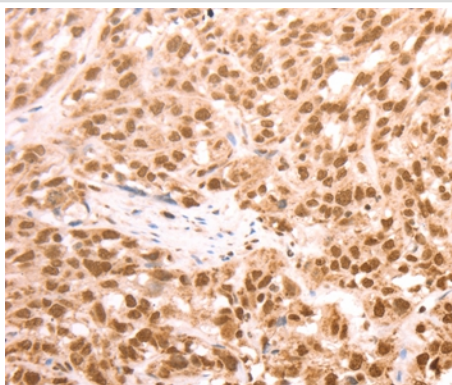
## Description

Product Name	AMD1 Antibody
Host Species	Rabbit
Clonality	Polyclonal
Purification	Antigen affinity purification.
Applications	IHC
Species Reactivity	Hu
Specificity	The antibody detects endogenous levels of total AMD1 protein.
Immunogen Type	Peptide
Immunogen Description	Synthetic peptide corresponding to a region derived from internal residues of human adenosylmethionine decarboxylase 1
Target Name	AMD1
Other Names	AMD; SAMDC; ADOMETDC
Accession No.	Swiss-Prot#: P17707NCBI Gene ID: 262Gene Accssion: NP_001028231
Uniprot	P17707
GeneID	262;
Concentration	1mg/ml
Formulation	Rabbit IgG in pH7.4 PBS, 0.05% NaN <sub>3</sub> , 40% Glycerol.
Storage	Store at -20°C

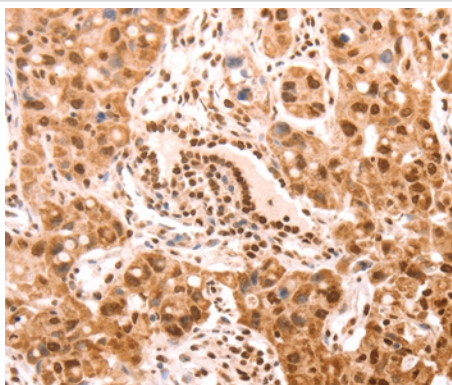
## Application Details

Immunohistochemistry: 1:50-1:200

## Images



Immunohistochemical analysis of paraffin-embedded Human esophagus cancer tissue using #37098 at dilution 1/25.



Immunohistochemical analysis of paraffin-embedded Human lung cancer tissue using #37098 at dilution 1/25.

## Background

This gene encodes an important intermediate enzyme in polyamine biosynthesis. The polyamines spermine, spermidine, and putrescine are low-molecular-weight aliphatic amines essential for cellular proliferation and tumor promotion. Two alternatively spliced transcript variants that encode different proteins have been identified. Pseudogenes of this gene are found on chromosomes 5, 6, 10, X and Y.

Note: This product is for in vitro research use only