

RPS6KA6 Antibody

Catalog No: #37135

Orders: order@signalwayantibody.comSupport: tech@signalwayantibody.com

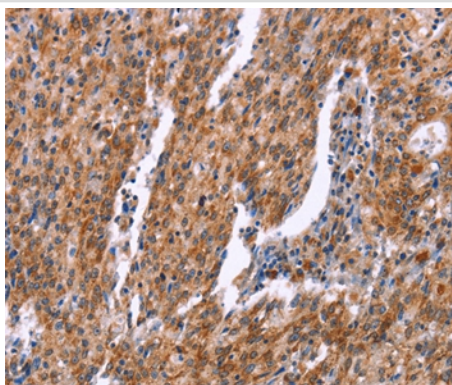
Description

Product Name	RPS6KA6 Antibody
Host Species	Rabbit
Clonality	Polyclonal
Purification	Antigen affinity purification.
Applications	IHC
Species Reactivity	Hu
Specificity	The antibody detects endogenous levels of total RPS6KA6 protein.
Immunogen Type	Peptide
Immunogen Description	Synthetic peptide corresponding to residues near the N terminal of human ribosomal protein S6 kinase, 90kDa, polypeptide 6
Target Name	RPS6KA6
Other Names	RSK4; PP90RSK4
Accession No.	Swiss-Prot#: Q9UK32NCBI Gene ID: 27330Gene Accssion: NP_055311
Uniprot	Q9UK32
GeneID	27330;
Concentration	1.5mg/ml
Formulation	Rabbit IgG in pH7.4 PBS, 0.05% NaN ₃ , 40% Glycerol.
Storage	Store at -20°C

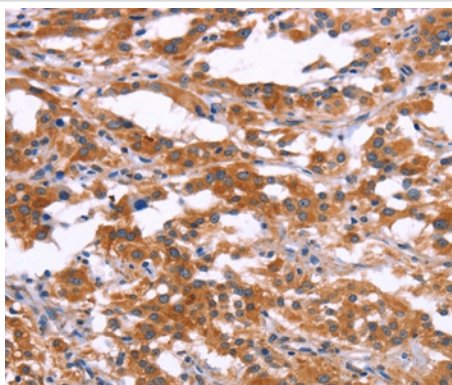
Application Details

Immunohistochemistry: 1:25-1:100

Images



Immunohistochemical analysis of paraffin-embedded Human gastric cancer tissue using #37135 at dilution 1/30.



Immunohistochemical analysis of paraffin-embedded Human thyroid cancer tissue using #37135 at dilution 1/30.

Background

This gene encodes a member of ribosomal S6 kinase family, serine-threonine protein kinases which are regulated by growth factors. The encoded protein may be distinct from other members of this family, however, as studies suggest it is not growth factor dependent and may not participate in the same signaling pathways.

Note: This product is for in vitro research use only