

KMT2D Antibody

Catalog No: #37139

Orders: order@signalwayantibody.comSupport: tech@signalwayantibody.com

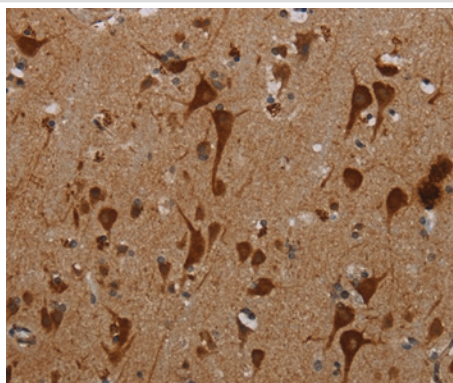
Description

Product Name	KMT2D Antibody
Host Species	Rabbit
Clonality	Polyclonal
Purification	Antigen affinity purification.
Applications	IHC
Species Reactivity	Hu
Specificity	The antibody detects endogenous levels of total KMT2D protein.
Immunogen Type	Peptide
Immunogen Description	Synthetic peptide corresponding to residues near the N terminal of human lysine (K)-specific methyltransferase 2D
Target Name	KMT2D
Other Names	ALR; KMS; MLL2; MLL4; AAD10; KABUK1; TNRC21; CAGL114
Accession No.	Swiss-Prot#: Q9UMN6 NCBI Gene ID: 9757Gene Accssion: NP_003473
Uniprot	Q9UMN6
GeneID	9757;
Concentration	2.8mg/ml
Formulation	Rabbit IgG in pH7.4 PBS, 0.05% NaN ₃ , 40% Glycerol.
Storage	Store at -20°C

Application Details

Immunohistochemistry: 1:50-1:200

Images



Immunohistochemical analysis of paraffin-embedded Human brain tissue using #37139 at dilution 1/40.

Background

The protein encoded by this gene is a histone methyltransferase that methylates the Lys-4 position of histone H3. The encoded protein is part of a large protein complex called ASCOM, which has been shown to be a transcriptional regulator of the beta-globin and estrogen receptor genes.

Mutations in this gene have been shown to be a cause of Kabuki syndrome.

Note: This product is for in vitro research use only