

ANP32C Antibody

Catalog No: #37145

Orders: order@signalwayantibody.comSupport: tech@signalwayantibody.com

Description

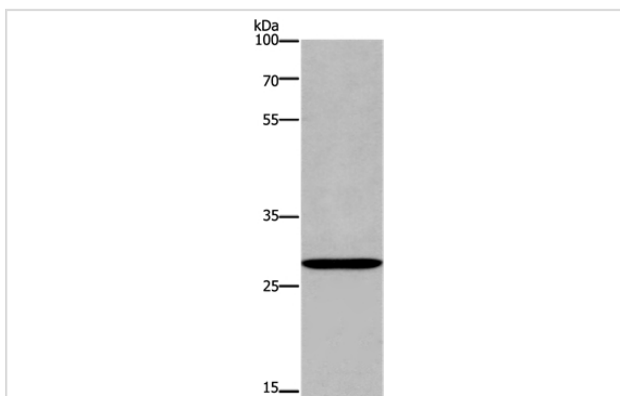
Product Name	ANP32C Antibody
Host Species	Rabbit
Clonality	Polyclonal
Purification	Antigen affinity purification.
Applications	WB IHC
Species Reactivity	Hu
Specificity	The antibody detects endogenous levels of total ANP32C protein.
Immunogen Type	Peptide
Immunogen Description	Synthetic peptide corresponding to residues near the N terminal of human acidic (leucine-rich) nuclear phosphoprotein 32 family, member C
Target Name	ANP32C
Other Names	PP32R1
Accession No.	Swiss-Prot#: O43423NCBI Gene ID: 23520Gene Accssion: NP_036535
Uniprot	O43423
GeneID	23520;
SDS-PAGE MW	27kd
Concentration	0.8mg/ml
Formulation	Rabbit IgG in pH7.4 PBS, 0.05% NaN ₃ , 40% Glycerol.
Storage	Store at -20°C

Application Details

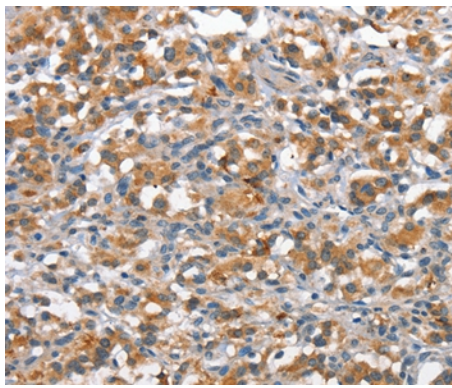
Western blotting: 1:500-1:2000

Immunohistochemistry: 1:15-1:50

Images



Gel: 8%SDS-PAGE
Lysate: 40ug Raji cell
Primary antibody: 1/400 dilution
Secondary antibody dilution: 1/8000
Exposure time: 20 seconds



Immunohistochemical analysis of paraffin-embedded Human thyroid cancer tissue using #37145 at dilution 1/15.

Background

Phosphoprotein 32 (PP32) is a tumor suppressor that can inhibit several types of cancers, including prostate and breast cancers. The protein encoded by this gene is one of at least two proteins that are similar in amino acid sequence to PP32 and are part of the same acidic nuclear phosphoprotein gene family. However, unlike PP32, the encoded protein is tumorigenic. The tumor suppressor function of PP32 has been localized to a 25 amino acid region that is divergent between PP32 and the protein encoded by this gene. This gene does not contain introns.

Note: This product is for in vitro research use only