

## Estrogen Receptor-a(Phospho-Ser118) Antibody

Catalog No: #11072



Package Size: #11072-1 50ul #11072-2 100ul

Orders: [order@signalwayantibody.com](mailto:order@signalwayantibody.com)Support: [tech@signalwayantibody.com](mailto:tech@signalwayantibody.com)

## Description

Product Name	Estrogen Receptor-a(Phospho-Ser118) Antibody
Host Species	Rabbit
Clonality	Polyclonal
Purification	Antibodies were produced by immunizing rabbits with synthetic phosphopeptide and KLH conjugates. Antibodies were purified by affinity-chromatography using epitope-specific phosphopeptide. Non-phospho specific antibodies were removed by chromatography using non-phosphopeptide.
Applications	WB IHC IF
Species Reactivity	Hu
Specificity	The antibody detects endogenous level of Estrogen Receptor-a only when phosphorylated at serine 118.
Immunogen Type	Peptide-KLH
Immunogen Description	Peptide sequence around phosphorylation site of serine 118 (Q-L-S(p)-P-F) derived from Human Estrogen Receptor-a.
Target Name	Estrogen Receptor-a
Modification	Phospho
Other Names	ER; ESR; ESR1; ESTR; ESTRA
Accession No.	Swiss-Prot: P03372NCBI Protein: NP_000116.2
Uniprot	P03372
GeneID	2099;
Concentration	1.0mg/ml
Formulation	Supplied at 1.0mg/mL in phosphate buffered saline (without Mg <sup>2+</sup> and Ca <sup>2+</sup> ), pH 7.4, 150mM NaCl, 0.02% sodium azide and 50% glycerol.
Storage	Store at -20°C for long term preservation (recommended). Store at 4°C for short term use.

## Application Details

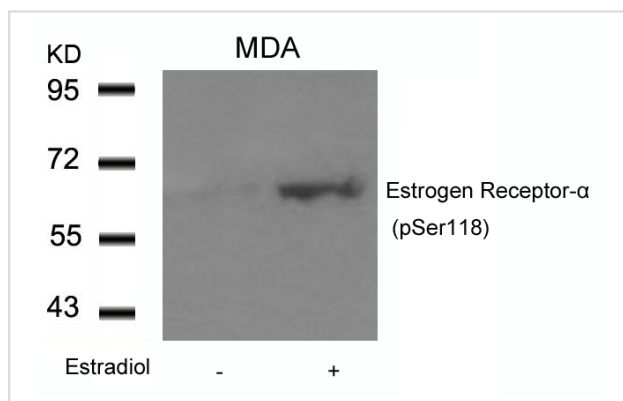
Predicted MW: 66kd

Western blotting: 1:500~1:1000

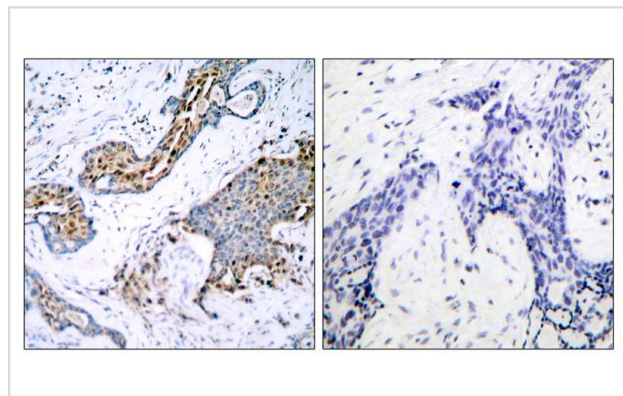
Immunohistochemistry: 1:50~1:100

Immunofluorescence: 1:100~1:200

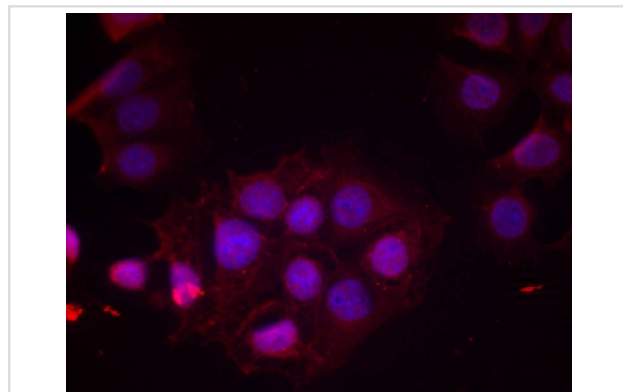
## Images



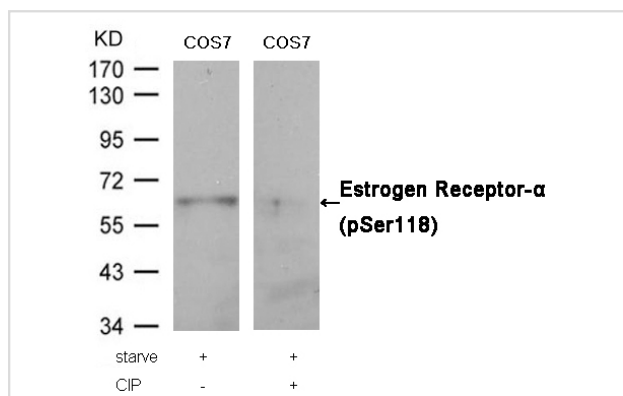
Western blot analysis of extracts from MDA cells untreated or treated with Estradiol using Estrogen Receptor-α(Phospho-Ser118) Antibody #11072.



Immunohistochemical analysis of paraffin-embedded human breast carcinoma tissue using Estrogen Receptor-α(Phospho-Ser118) Antibody #11072(left) or the same antibody preincubated with blocking peptide(right).



Immunofluorescence staining of methanol-fixed MCF cells using Estrogen Receptor-α(Phospho-Ser118) Antibody #11072.



Western blot analysis of extracts from COS7 cells, treated with starve or calf intestinal phosphatase (CIP), using Estrogen Receptor-α (Phospho-Ser118) Antibody #11072.

## Background

Nuclear hormone receptor. The steroid hormones and their receptors are involved in the regulation of eukaryotic gene expression and affect cellular proliferation and differentiation in target tissues.

Ramsauer VP, et al. (2003)J Biol Chem; 278(32): 30142-7.

Jepson S, et al. (2002)Oncogene; 21(49): 7524-32.

Ren Z, et al. (2002)J Biol Chem; 277(41): 38486-93.

Eppenberger-Castori S, et al. (2001)J Clin Oncol; 19(3): 645-56.

---

Note: This product is for in vitro research use only