

Rab 2 antibody

Catalog No: #22196



Orders: order@signalwayantibody.com
Support: tech@signalwayantibody.com

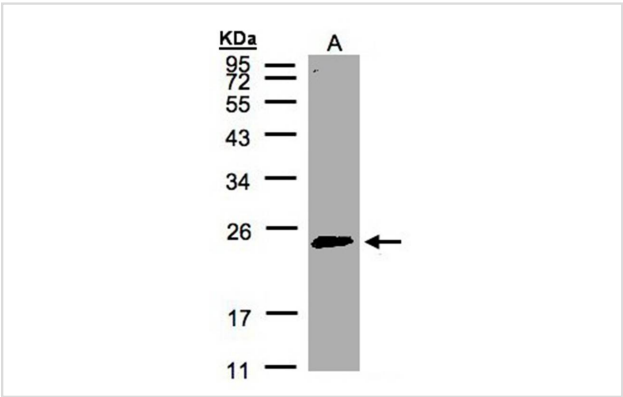
Description

Product Name	Rab 2 antibody
Host Species	Rabbit
Clonality	Polyclonal
Purification	Purified by antigen-affinity chromatography.
Applications	WB IHC
Species Reactivity	Hu
Immunogen Type	Peptide
Immunogen Description	Synthetic peptide contain a sequence corresponding to a region within amino acids 148 and 210 of Human RAB2A
Target Name	Rab 2
Accession No.	Swiss-Prot:P61019Gene ID:5862
Uniprot	P61019
GeneID	5862;
Concentration	0.5mg/ml
Formulation	Supplied in 0.1M Tris-buffered saline with 10% Glycerol (pH7.0). 0.01% Thimerosal was added as a preservative.
Storage	Store at -20°C for long term preservation (recommended). Store at 4°C for short term use.

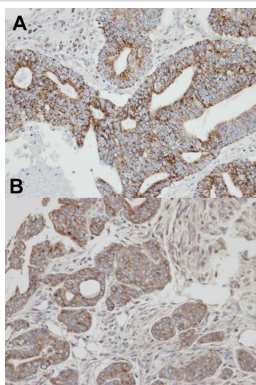
Application Details

Predicted MW: 24kd
Western blotting: 1:500-1:3000
Immunohistochemistry: 1:100-1:250

Images



Sample(30 ug of whole cell lysate)
A: HeLa S3
12% SDS PAGE
Primary antibody diluted at 1: 500



A:Immunohistochemical analysis of paraffin-embedded endometrial OCVA, using RAB2A antibody at 1: 100 dilution.
B:Immunohistochemical analysis of paraffin-embedded N87 xenograft, using RAB2A antibody at 1: 100 dilution.

Background

Members of the Rab protein family are nontransforming monomeric GTP-binding proteins of the Ras superfamily that contain 4 highly conserved regions involved in GTP binding and hydrolysis. Rabs are prenylated, membrane-bound proteins involved in vesicular fusion and trafficking. The mammalian RAB proteins show striking similarities to the *S. cerevisiae* YPT1 and SEC4 proteins, Ras-related GTP-binding proteins involved in the regulation of secretion.[supplied by OMIM]

Note: This product is for in vitro research use only