

PGR Antibody

Catalog No: #37221

Orders: order@signalwayantibody.comSupport: tech@signalwayantibody.com

Description

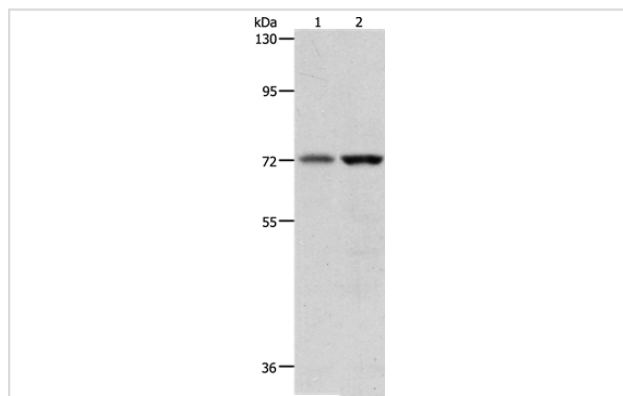
Product Name	PGR Antibody
Host Species	Rabbit
Clonality	Polyclonal
Purification	Antigen affinity purification.
Applications	WB IHC
Species Reactivity	Hu
Specificity	The antibody detects endogenous levels of total PGR protein.
Immunogen Type	Peptide
Immunogen Description	Synthetic peptide corresponding to a region derived from internal residues of human Progesterone receptor
Target Name	PGR
Other Names	PR; NR3C3
Accession No.	Swiss-Prot#: P06401NCBI Gene ID: 5241Gene Accssion: NP_001258090
Uniprot	P06401
GeneID	5241;
SDS-PAGE MW	73kd
Concentration	1.2mg/ml
Formulation	Rabbit IgG in pH7.4 PBS, 0.05% NaN ₃ , 40% Glycerol.
Storage	Store at -20°C

Application Details

Western blotting: 1:500-1:2000

Immunohistochemistry: 1:25-1:100

Images



Gel: 8%SDS-PAGE

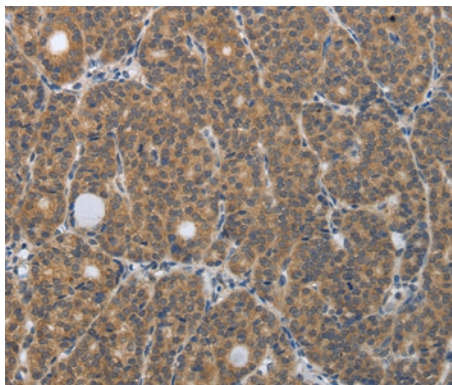
Lysates (from left to right): 293T and human fetal muscle tissue

Amount of lysate: 40ug per lane

Primary antibody: 1/600 dilution

Secondary antibody dilution: 1/8000

Exposure time: 10 seconds



Immunohistochemical analysis of paraffin-embedded Human thyroid cancer tissue using #37221 at dilution 1/30.

Background

This gene encodes a member of the steroid receptor superfamily. The encoded protein mediates the physiological effects of progesterone, which plays a central role in reproductive events associated with the establishment and maintenance of pregnancy. This gene uses two distinct promoters and translation start sites in the first exon to produce two isoforms, A and B. The two isoforms are identical except for the additional 165 amino acids found in the N-terminus of isoform B and mediate their own response genes and physiologic effects with little overlap.

Note: This product is for in vitro research use only