

RRAD Antibody

Catalog No: #37229

Orders: order@signalwayantibody.comSupport: tech@signalwayantibody.com

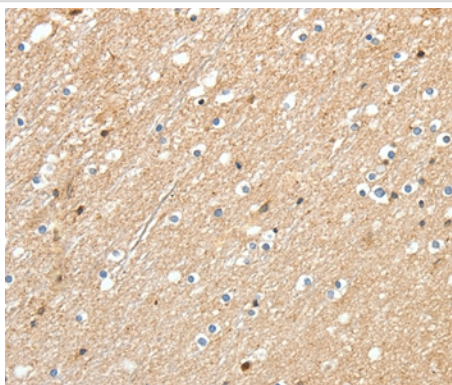
Description

Product Name	RRAD Antibody
Host Species	Rabbit
Clonality	Polyclonal
Purification	Antigen affinity purification.
Applications	IHC
Species Reactivity	Hu Ms Rt
Specificity	The antibody detects endogenous levels of total RRAD protein.
Immunogen Type	Peptide
Immunogen Description	Synthetic peptide corresponding to a region derived from internal residues of human Ras-related associated with diabetes
Target Name	RRAD
Other Names	RAD; RAD1; REM3
Accession No.	Swiss-Prot#: P55042NCBI Gene ID: 6236Gene Accssion: NP_004156.1
Uniprot	P55042
GeneID	6236;
Concentration	1.2mg/ml
Formulation	Rabbit IgG in pH7.4 PBS, 0.05% NaN ₃ , 40% Glycerol.
Storage	Store at -20°C

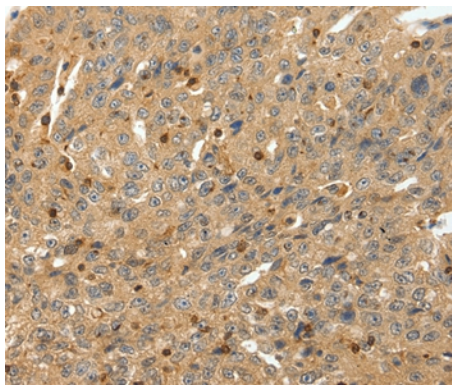
Application Details

Immunohistochemistry: 1:25-1:100

Images



Immunohistochemical analysis of paraffin-embedded Human brain tissue using #37229 at dilution 1/30.



Immunohistochemical analysis of paraffin-embedded Human ovarian cancer tissue using #37229 at dilution 1/30.

Background

The protein may be important in cardiac antiarrhythmia via the strong suppression of voltage-gated L-type Ca^{2+} currents. As regulator of voltage-dependent L-type calcium channel subunit $\alpha\text{-1C}$ trafficking to the cell membrane. Inhibits cardiac hypertrophy through the calmodulin-dependent kinase II (CaMKII) pathway and phosphorylation and activation of CAMK2D. Mostly expressed in the heart and muscle of type II diabetic humans. Also found in the skeletal muscle, lung and adipose tissue. Lesser amounts in placenta and kidney.

Note: This product is for in vitro research use only