

ROS1 Antibody

Catalog No: #37230

Orders: order@signalwayantibody.comSupport: tech@signalwayantibody.com

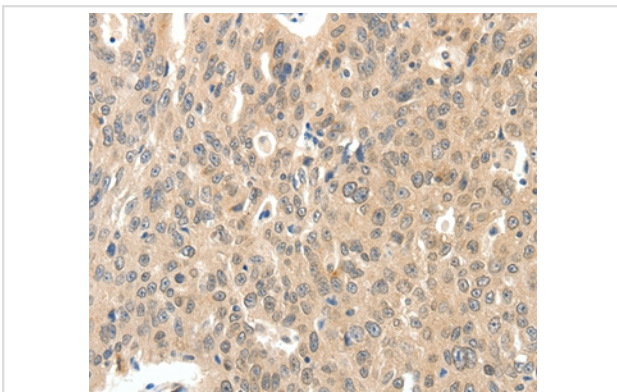
Description

Product Name	ROS1 Antibody
Host Species	Rabbit
Clonality	Polyclonal
Purification	Antigen affinity purification.
Applications	IHC
Species Reactivity	Hu
Specificity	The antibody detects endogenous levels of total ROS1 protein.
Immunogen Type	Peptide
Immunogen Description	Synthetic peptide corresponding to a region derived from internal residues of human c-ros oncogene 1 , receptor tyrosine kinase
Target Name	ROS1
Other Names	ROS; MCF3; c-ros-1
Accession No.	Swiss-Prot#: P08922NCBI Gene ID: 6098Gene Accssion: NP_002935.2
Uniprot	P08922
GeneID	6098;
Concentration	1.4mg/ml
Formulation	Rabbit IgG in pH7.4 PBS, 0.05% NaN ₃ , 40% Glycerol.
Storage	Store at -20°C

Application Details

Immunohistochemistry: 1:50-1:200

Images



Immunohistochemical analysis of paraffin-embedded Human ovarian cancer tissue using #37230 at dilution 1/40.

Background

This proto-oncogene, highly-expressed in a variety of tumor cell lines, belongs to the sevenless subfamily of tyrosine kinase insulin receptor genes. The protein encoded by this gene is a type I integral membrane protein with tyrosine kinase activity. The protein may function as a growth or

differentiation factor receptor.

Note: This product is for in vitro research use only