

## PAN3 antibody

Catalog No: #22199

Orders: [order@signalwayantibody.com](mailto:order@signalwayantibody.com)Support: [tech@signalwayantibody.com](mailto:tech@signalwayantibody.com)

## Description

Product Name	PAN3 antibody
Host Species	Rabbit
Clonality	Polyclonal
Purification	Purified by antigen-affinity chromatography.
Applications	WB IF
Species Reactivity	Hu
Immunogen Type	Recombinant protein
Immunogen Description	Recombinant protein fragment contain a sequence corresponding to a region within amino acids 147 and 460 of Human PAN3
Target Name	PAN3
Accession No.	NCBI Gene ID: 255967NCBI mRNA#: NM_175854NCBI Protein#: NP_787050
Uniprot	Q58A45
GeneID	255967;
Concentration	1mg/ml
Formulation	Supplied in 0.1M Tris-buffered saline with 10% Glycerol (pH7.0). 0.01% Thimerosal was added as a preservative.
Storage	Store at -20°C for long term preservation (recommended). Store at 4°C for short term use.

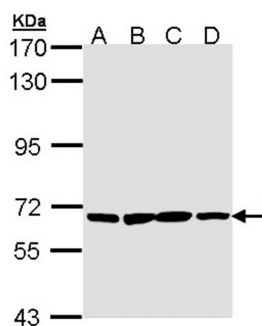
## Application Details

Predicted MW: 76kd

Western blotting: 1:500-1:3000

Immunofluorescence: 1:100-1:200

## Images



Sample (30 ug of whole cell lysate)

A: H1299

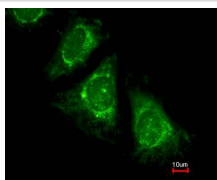
B: HeLa

C: Hep G2

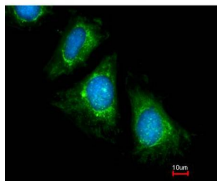
D: Molt-4

7.5% SDS PAGE

Primary antibody diluted at 1: 1000



Costained with Hoechst 33342



Immunofluorescence analysis of methanol-fixed HeLa, using PAN3 antibody at 1: 200 dilution.

---

Note: This product is for in vitro research use only