

SP1 Antibody

Catalog No: #37251

Orders: order@signalwayantibody.comSupport: tech@signalwayantibody.com

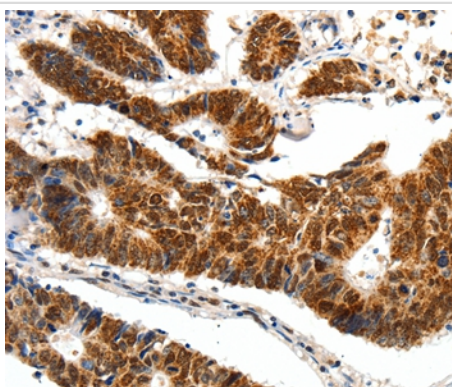
Description

| | |
|-----------------------|--|
| Product Name | SP1 Antibody |
| Host Species | Rabbit |
| Clonality | Polyclonal |
| Purification | Antigen affinity purification. |
| Applications | WB IHC IF |
| Species Reactivity | Hu Ms Rt |
| Specificity | The antibody detects endogenous levels of total SP1 protein. |
| Immunogen Type | Peptide |
| Immunogen Description | Synthetic peptide corresponding to a region derived from internal residues of human Sp1 transcription factor |
| Target Name | SP1 |
| Other Names | SP1; Sp1 transcription factor; specificity protein 1; Transcription factor Sp1; TSFP1 |
| Accession No. | Swiss-Prot#: P08047NCBI Gene ID: 6667Gene Accssion: NP_612482.2 |
| Uniprot | P08047 |
| GeneID | 6667; |
| Concentration | 1.3mg/ml |
| Formulation | Rabbit IgG in pH7.4 PBS, 0.05% NaN ₃ , 40% Glycerol. |
| Storage | Store at -20°C |

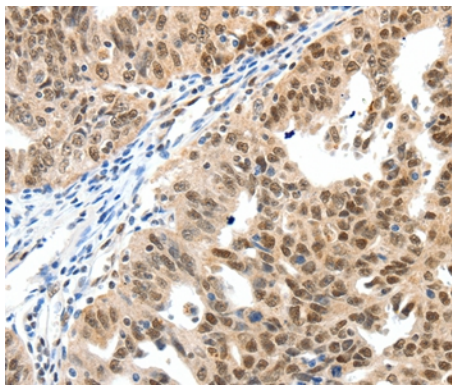
Application Details

Immunohistochemistry: 1:50-1:200

Images



Immunohistochemical analysis of paraffin-embedded Human colon cancer tissue using #37251 at dilution 1/40.



Immunohistochemical analysis of paraffin-embedded Human ovarian cancer tissue using #37251 at dilution 1/40.

Background

The protein encoded by this gene is a zinc finger transcription factor that binds to GC-rich motifs of many promoters. The encoded protein is involved in many cellular processes, including cell differentiation, cell growth, apoptosis, immune responses, response to DNA damage, and chromatin remodeling. Post-translational modifications such as phosphorylation, acetylation, glycosylation, and proteolytic processing significantly affect the activity of this protein, which can be an activator or a repressor. Three transcript variants encoding different isoforms have been found for this gene.

Note: This product is for in vitro research use only