

# SPATA20 Antibody

Catalog No: #37253



Orders: [order@signalwayantibody.com](mailto:order@signalwayantibody.com)  
Support: [tech@signalwayantibody.com](mailto:tech@signalwayantibody.com)

## Description

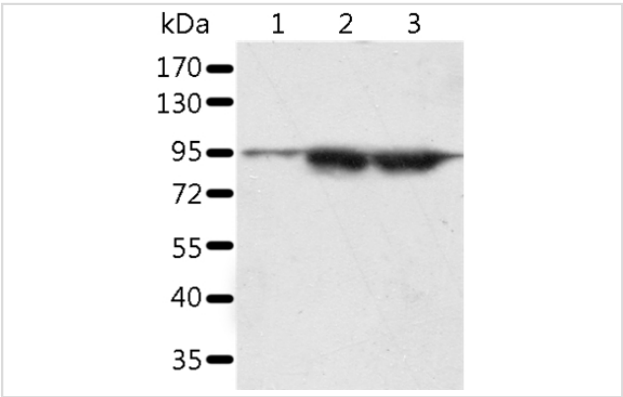
Product Name	SPATA20 Antibody
Host Species	Rabbit
Clonality	Polyclonal
Purification	Antigen affinity purification.
Applications	WB IHC
Species Reactivity	Hu
Specificity	The antibody detects endogenous levels of total SPATA20 protein.
Immunogen Type	Peptide
Immunogen Description	Synthetic peptide corresponding to a region derived from internal residues of human spermatogenesis associated 20
Target Name	SPATA20
Other Names	SSP411; Tisp78
Accession No.	Swiss-Prot#: Q8TB22NCBI Gene ID: 64847Gene Accssion: NP_001245301
Uniprot	Q8TB22
GeneID	64847;
SDS-PAGE MW	88kd
Concentration	2.8mg/ml
Formulation	Rabbit IgG in pH7.4 PBS, 0.05% NaN3, 40% Glycerol.
Storage	Store at -20°C

## Application Details

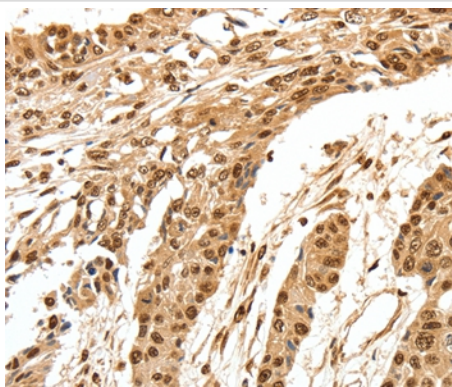
Western blotting: 1:500-1:2000

Immunohistochemistry: 1:100-1:300

## Images



Gel: 10%SDS-PAGE  
Lysates (from left to right): A549 and Incap cell, human seminoma tissue  
Amount of lysate: 60ug per lane  
Primary antibody: 1/1000 dilution  
Secondary antibody dilution: 1/8000  
Exposure time: 5 minutes



Immunohistochemical analysis of paraffin-embedded Human esophagus cancer tissue using #37253 at dilution 1/70.

## Background

The protein may play a role in fertility regulation. It were significantly upregulated in individual bile samples from Cholangiocarcinoma patients by Western blotting and Immunohistochemistry, relative to normal tissues. It acts as a potential serum diagnostic biomarker for Cholangiocarcinoma.

Note: This product is for in vitro research use only