

STEAP4 Antibody

Catalog No: #37261



Orders: order@signalwayantibody.com
Support: tech@signalwayantibody.com

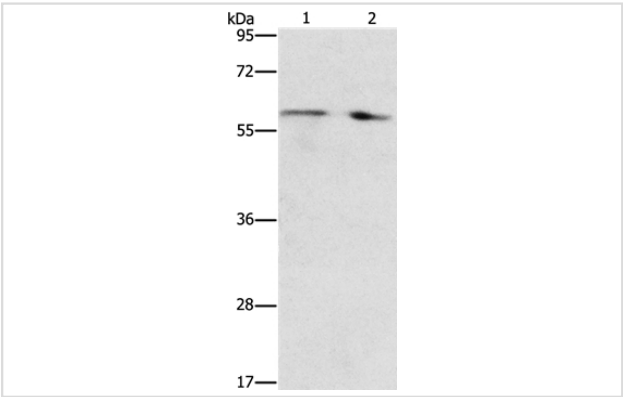
Description

Product Name	STEAP4 Antibody
Host Species	Rabbit
Clonality	Polyclonal
Purification	Antigen affinity purification.
Applications	WB IHC
Species Reactivity	Hu
Specificity	The antibody detects endogenous levels of total STEAP4 protein.
Immunogen Type	Peptide
Immunogen Description	Synthetic peptide corresponding to residues near the C terminal of human STEAP family member 4
Target Name	STEAP4
Other Names	TIARP; STAMP2; TNFAIP9
Accession No.	Swiss-Prot#: Q687X5NCBI Gene ID: 79689Gene Accssion: NP_001192244
Uniprot	Q687X5
GeneID	79689;
SDS-PAGE MW	52kd
Concentration	0.9mg/ml
Formulation	Rabbit IgG in pH7.4 PBS, 0.05% NaN3, 40% Glycerol.
Storage	Store at -20°C

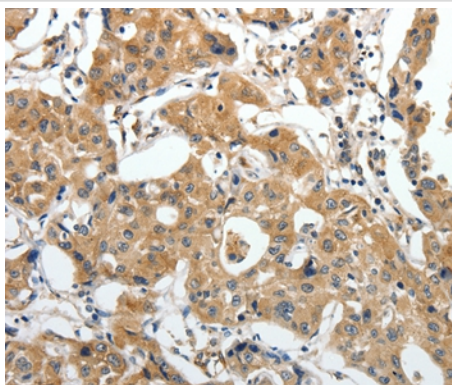
Application Details

Western blotting: 1:200-1:1000
Immunohistochemistry: 1:25-1:100

Images



Gel: 10%SDS-PAGE
Lysates (from left to right): Human liver cancer and fetal liver tissue
Amount of lysate: 40ug per lane
Primary antibody: 1/450 dilution
Secondary antibody dilution: 1/8000
Exposure time: 40 seconds



Immunohistochemical analysis of paraffin-embedded Human lung cancer tissue using #37261 at dilution 1/25.

Background

The protein encoded by this gene belongs to the STEAP (six transmembrane epithelial antigen of prostate) family, and resides in the golgi apparatus. It functions as a metalloreductase that has the ability to reduce both $\text{Fe}(3+)$ to $\text{Fe}(2+)$ and $\text{Cu}(2+)$ to $\text{Cu}(1+)$, using $\text{NAD}(+)$ as acceptor. Studies in mice and human suggest that this gene maybe involved in adipocyte development and metabolism, and may contribute to the normal biology of the prostate cell, as well as prostate cancer progression. Alternatively spliced transcript variants encoding different isoforms have been found for this gene.

Note: This product is for in vitro research use only