

SV2A Antibody

Catalog No: #37263

Orders: order@signalwayantibody.comSupport: tech@signalwayantibody.com

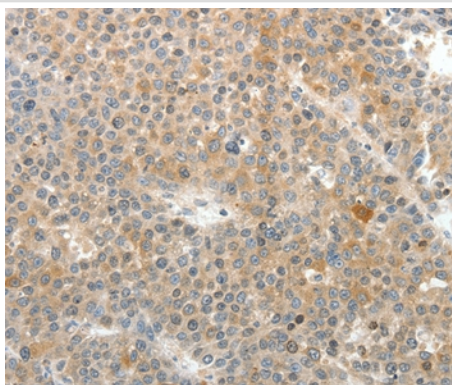
Description

Product Name	SV2A Antibody
Host Species	Rabbit
Clonality	Polyclonal
Purification	Antigen affinity purification.
Applications	IHC
Species Reactivity	Hu Ms Rt
Specificity	The antibody detects endogenous levels of total SV2A protein.
Immunogen Type	Peptide
Immunogen Description	Synthetic peptide corresponding to a region derived from internal residues of human synaptic vesicle glycoprotein 2A
Target Name	SV2A
Other Names	SV2
Accession No.	Swiss-Prot#: Q7L0J3NCBI Gene ID: 9900Gene Accssion: NP_055664
Uniprot	Q7L0J3
GeneID	9900;
Concentration	0.8mg/ml
Formulation	Rabbit IgG in pH7.4 PBS, 0.05% NaN ₃ , 40% Glycerol.
Storage	Store at -20°C

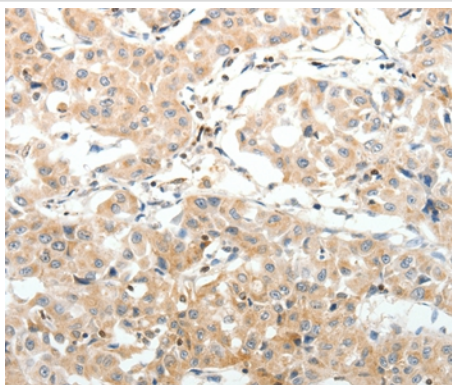
Application Details

Immunohistochemistry: 1:25-1:100

Images



Immunohistochemical analysis of paraffin-embedded Human liver cancer tissue using #37263 at dilution 1/25.



Immunohistochemical analysis of paraffin-embedded Human lung cancer tissue using #37263 at dilution 1/25.

Background

This protein plays a role in the control of regulated secretion in neural and endocrine cells, enhancing selectively low-frequency neurotransmission. Positively regulates vesicle fusion by maintaining the readily releasable pool of secretory vesicles. It is identified as the brain binding-site for the antiepileptic drug levetiracetam/lev.

Note: This product is for in vitro research use only