

## TENM3 Antibody

Catalog No: #37270

Orders: [order@signalwayantibody.com](mailto:order@signalwayantibody.com)Support: [tech@signalwayantibody.com](mailto:tech@signalwayantibody.com)

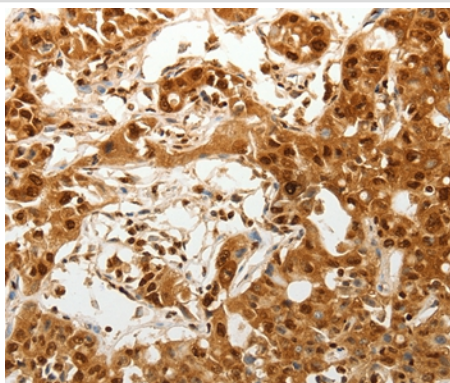
## Description

Product Name	TENM3 Antibody
Host Species	Rabbit
Clonality	Polyclonal
Purification	Antigen affinity purification.
Applications	IHC
Species Reactivity	Hu Ms
Specificity	The antibody detects endogenous levels of total TENM3 protein.
Immunogen Type	Peptide
Immunogen Description	Synthetic peptide corresponding to a region derived from internal residues of human teneurin transmembrane protein 3
Target Name	TENM3
Other Names	ODZ3; TNM3; Ten-m3
Accession No.	Swiss-Prot#: Q9P273 NCBI Gene ID: 55714Gene Accssion: NP_001073946
Uniprot	Q9P273
GeneID	55714;
Concentration	1.7mg/ml
Formulation	Rabbit IgG in pH7.4 PBS, 0.05% NaN <sub>3</sub> , 40% Glycerol.
Storage	Store at -20°C

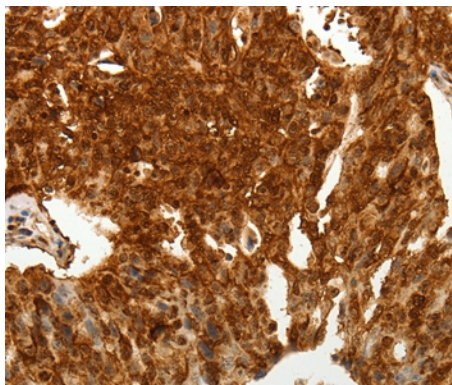
## Application Details

Immunohistochemistry: 1:100-1:300

## Images



Immunohistochemical analysis of paraffin-embedded Human ovarian cancer tissue using #37270 at dilution 1/50.



Immunohistochemical analysis of paraffin-embedded Human lung cancer tissue using #37270 at dilution 1/50.

## Background

This protein involved in neural development, regulating the establishment of proper connectivity within the nervous system. It promotes axon guidance and homophilic cell adhesion. And it plays a role in the development of the visual pathway; regulates the formation in ipsilateral retinal mapping to both the dorsal lateral geniculate nucleus (dLGN) and the superior colliculus (SC). May be involved in the differentiation of the fibroblast-like cells in the superficial layer of mandibular condylar cartilage into chondrocytes.

Note: This product is for in vitro research use only