

RARRES1 Antibody

Catalog No: #37279



Orders: [order@signalwayantibody.com](mailto:order@signalwayantibody.com)  
Support: [tech@signalwayantibody.com](mailto:tech@signalwayantibody.com)

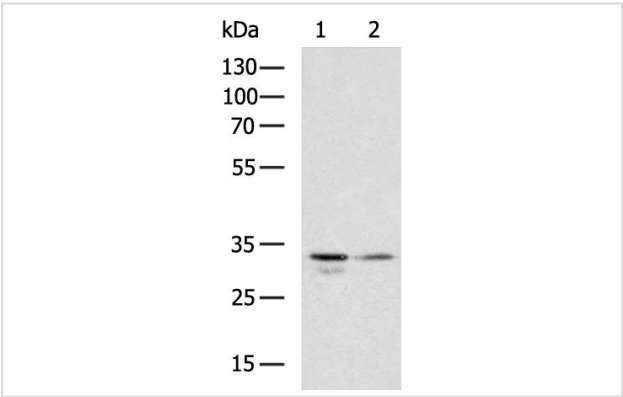
Description

Product Name	RARRES1 Antibody
Host Species	Rabbit
Clonality	Polyclonal
Purification	Antigen affinity purification.
Applications	WB IHC
Species Reactivity	Hu
Specificity	The antibody detects endogenous levels of total RARRES1 protein.
Immunogen Type	Peptide
Immunogen Description	Synthetic peptide of human RARRES1
Target Name	RARRES1
Other Names	TIG1
Accession No.	Swiss-Prot#: P49788NCBI Gene ID: 5918Gene Accssion: NP_002879
Uniprot	P49788
GeneID	5918;
SDS-PAGE MW	33kDa
Concentration	1.2 mg/ml
Formulation	Rabbit IgG in pH7.4 PBS, 0.05% NaN3, 40% Glycerol.
Storage	Store at -20°C

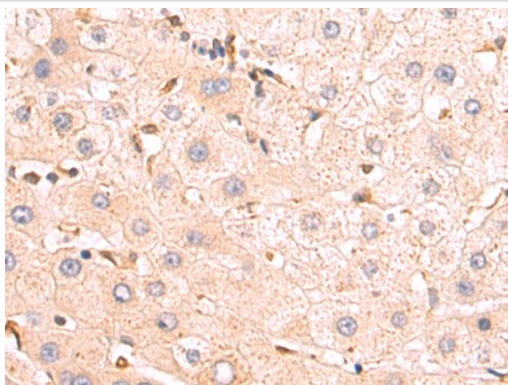
Application Details

WB 1:1000-1:5000  
IHC 1:50-1:200

Images



Gel: 8%SDS-PAGE  
Lysate: 40 ug  
Lane 1-2: 293T and Hela cell lysates  
Primary antibody: (RARRES1 Antibody) at dilution 1/1000  
Secondary antibody: (HRP-conjugated Goat anti rabbit IgG) at 1/5000 dilution  
Exposure time: 1 minute



The image on the left is immunohistochemistry of paraffinembedded Human liver cancer tissue using (RARRES1 Antibody) at dilution 1/50

## Background

This gene was identified as a retinoid acid (RA) receptor-responsive gene. It encodes a type 1 membrane protein. The expression of this gene is upregulated by tazarotene as well as by retinoic acid receptors. The expression of this gene is found to be downregulated in prostate cancer, which is caused by the methylation of its promoter and CpG island. Alternatively spliced transcript variant encoding distinct isoforms have been observed.?

Note: This product is for in vitro research use only