

TRPC3 Antibody

Catalog No: #37283



Orders: order@signalwayantibody.com
Support: tech@signalwayantibody.com

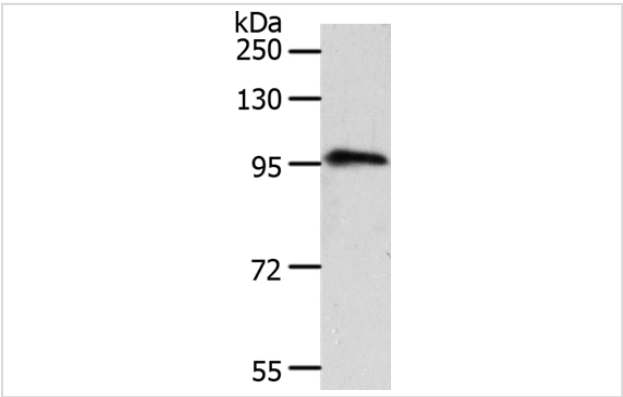
Description

Product Name	TRPC3 Antibody
Host Species	Rabbit
Clonality	Polyclonal
Purification	Antigen affinity purification.
Applications	WB IHC
Species Reactivity	Hu
Specificity	The antibody detects endogenous levels of total TRPC3 protein.
Immunogen Type	Peptide
Immunogen Description	Synthetic peptide corresponding to a region derived from internal residues of human Transient receptor potential cation channel, subfamily C, member 3
Target Name	TRPC3
Other Names	TRP3
Accession No.	Swiss-Prot#: Q13507NCBI Gene ID: 7222Gene Accssion: NP_003296
Uniprot	Q13507
GeneID	7222;
SDS-PAGE MW	97kd
Concentration	3.2mg/ml
Formulation	Rabbit IgG in pH7.4 PBS, 0.05% NaN3, 40% Glycerol.
Storage	Store at -20°C

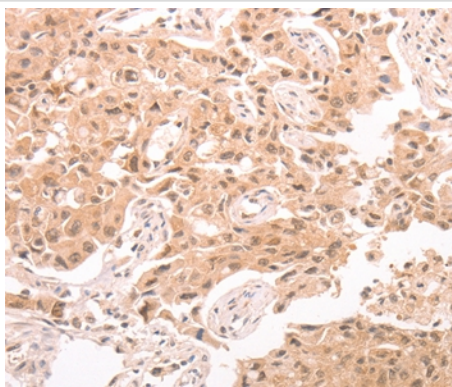
Application Details

Western blotting: 1:1000-1:5000
Immunohistochemistry: 1:100-1:300

Images



Gel: 8%SDS-PAGE
Lysates (from left to right): Human fetal brain tissue
Amount of lysate: 40ug per lane
Primary antibody: 1/1600 dilution
Secondary antibody dilution: 1/8000
Exposure time: 2 minutes



Immunohistochemical analysis of paraffin-embedded Human lung cancer tissue using #37283 at dilution 1/80.

Background

The protein encoded by this gene is a membrane protein that can form a non-selective channel permeable to calcium and other cations. The encoded protein appears to be induced to form channels by a receptor tyrosine kinase-activated phosphatidylinositol second messenger system and also by depletion of intracellular calcium stores. Two transcript variants encoding different isoforms have been found for this gene.

Note: This product is for in vitro research use only