

LPAR2 Antibody

Catalog No: #37287

Orders: order@signalwayantibody.comSupport: tech@signalwayantibody.com

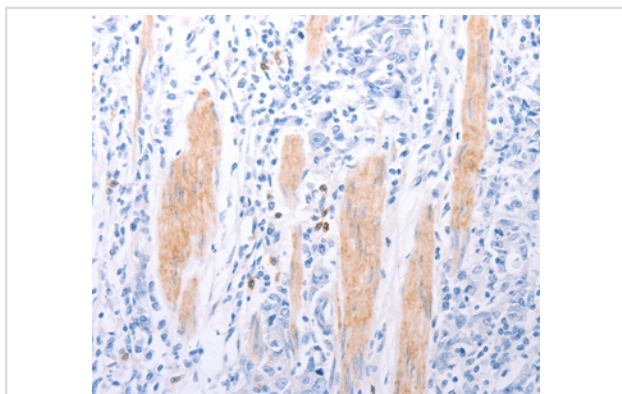
Description

Product Name	LPAR2 Antibody
Host Species	Rabbit
Clonality	Polyclonal
Purification	Antigen affinity purification.
Applications	IHC
Species Reactivity	Hu
Specificity	The antibody detects endogenous levels of total LPAR2 protein.
Immunogen Type	Peptide
Immunogen Description	Synthetic peptide corresponding to residues near the C terminal of human lysophosphatidic acid receptor 2
Target Name	LPAR2
Other Names	EDG4; LPA2; EDG-4; LPA-2
Accession No.	Swiss-Prot#: Q9HBW0NCBI Gene ID: 9170Gene Accssion: NP_004711
Uniprot	Q9HBW0
GeneID	9170;
Concentration	1.6mg/ml
Formulation	Rabbit IgG in pH7.4 PBS, 0.05% NaN ₃ , 40% Glycerol.
Storage	Store at -20°C

Application Details

Immunohistochemistry: 1:25-1:100

Images



Immunohistochemical analysis of paraffin-embedded Human gastric cancer tissue using #37287 at dilution 1/40.

Background

This gene encodes a member of family I of the G protein-coupled receptors, as well as the EDG family of proteins. This protein functions as a lysophosphatidic acid (LPA) receptor and contributes to Ca²⁺ mobilization, a critical cellular response to LPA in cells, through association with Gi and Gq proteins. An alternative splice variant has been described but its full length sequence has not been determined.

Note: This product is for in vitro research use only