

## S1PR1 Antibody

Catalog No: #37288

Orders: [order@signalwayantibody.com](mailto:order@signalwayantibody.com)Support: [tech@signalwayantibody.com](mailto:tech@signalwayantibody.com)

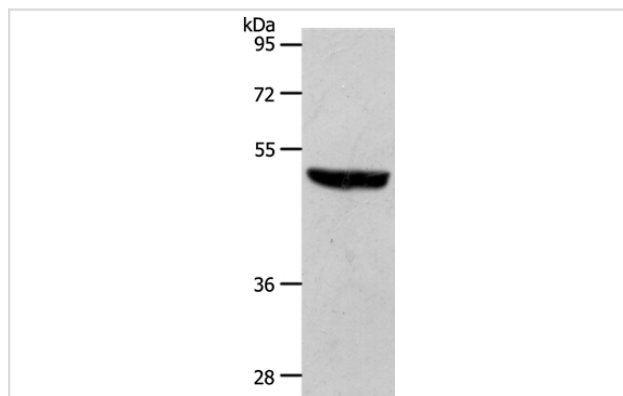
## Description

Product Name	S1PR1 Antibody
Host Species	Rabbit
Clonality	Polyclonal
Purification	Antigen affinity purification.
Applications	WB
Species Reactivity	Hu Ms
Specificity	The antibody detects endogenous levels of total S1PR1 protein.
Immunogen Type	Peptide
Immunogen Description	Synthetic peptide corresponding to residues near the C terminal of human Sphingosine-1-phosphate receptor 1
Target Name	S1PR1
Other Names	EDG1; S1P1; CD363; ECGF1; EDG-1; CHEDG1; D1S3362
Accession No.	Swiss-Prot#: P21453NCBI Gene ID: 1901Gene Accssion: NP_001391
Uniprot	P21453
GeneID	1901;
SDS-PAGE MW	43kd
Concentration	1.4mg/ml
Formulation	Rabbit IgG in pH7.4 PBS, 0.05% NaN <sub>3</sub> , 40% Glycerol.
Storage	Store at -20°C

## Application Details

Western blotting: 1:500-1:2000

## Images



Gel: 10%SDS-PAGE  
 Lysates (from left to right): Mouse brain tissue  
 Amount of lysate: 40ug per lane  
 Primary antibody: 1/700 dilution  
 Secondary antibody dilution: 1/8000  
 Exposure time: 10 seconds

## Background

The protein encoded by this gene is structurally similar to G protein-coupled receptors and is highly expressed in endothelial cells. It binds the ligand

sphingosine-1-phosphate with high affinity and high specificity, and suggested to be involved in the processes that regulate the differentiation of endothelial cells. Activation of this receptor induces cell-cell adhesion.

---

Note: This product is for in vitro research use only