

S1PR5 Antibody

Catalog No: #37291



Orders: [order@signalwayantibody.com](mailto:order@signalwayantibody.com)  
Support: [tech@signalwayantibody.com](mailto:tech@signalwayantibody.com)

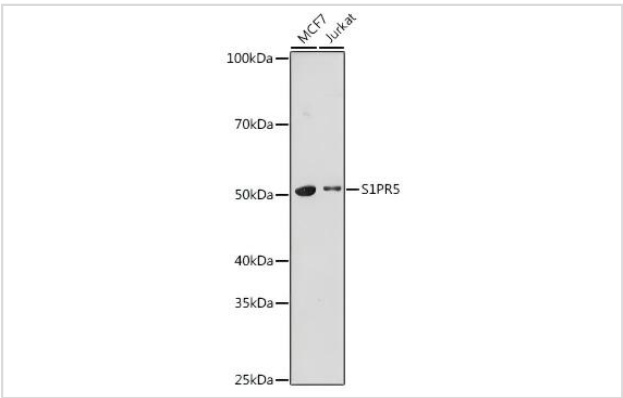
Description

Product Name	S1PR5 Antibody
Host Species	Rabbit
Clonality	Polyclonal
Purification	Antigen affinity purification.
Applications	WB
Species Reactivity	Human
Specificity	The antibody detects endogenous levels of total S1PR5 protein.
Immunogen Type	Peptide
Immunogen Description	Recombinant fusion protein of human S1PR5
Target Name	S1PR5
Other Names	EDG8; S1P5; Edg-8; SPPR-1; SPPR-2
Accession No.	Swiss-Prot#: Q9H228NCBI Gene ID: 53637Gene Accssion: NP_110387
Uniprot	Q9H228
GeneID	53637;
Calculated MW	Calculated Mol Weight:42 kDa Observed Mol Weight:50 kDa
Formulation	PBS with 0.01% thimerosal, 50% glycerol, pH7.3.
Storage	Store at -20°C

Application Details

WB 1:500-1:1000;

Images



Western blot analysis of various lysates using S1PR5 Rabbit pAb at 1:1000 dilution

Background

The lysosphingolipid sphingosine 1-phosphate (S1P) regulates cell proliferation, apoptosis, motility, and neurite retraction. Its actions may be both intracellular as a second messenger and extracellular as a receptor ligand. S1P and the structurally related lysolipid mediator lysophosphatidic acid (LPA) signal cells through a set of G protein-coupled receptors known as EDG receptors. Some EDG receptors are S1P receptors; others are LPA receptors.

---

Note: This product is for in vitro research use only