

## SMO Antibody

Catalog No: #37295

Orders: [order@signalwayantibody.com](mailto:order@signalwayantibody.com)Support: [tech@signalwayantibody.com](mailto:tech@signalwayantibody.com)

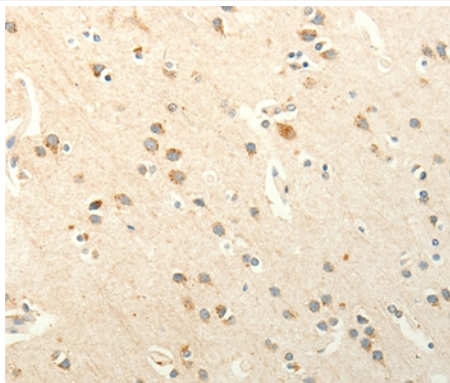
## Description

|                       |   |
|-----------------------|---|
| Product Name          | SMO Antibody  |
| Host Species          | Rabbit  |
| Clonality             | Polyclonal  |
| Purification          | Antigen affinity purification.  |
| Applications          | IHC   |
| Species Reactivity    | Hu  |
| Specificity           | The antibody detects endogenous levels of total SMO protein.  |
| Immunogen Type        | Peptide   |
| Immunogen Description | Synthetic peptide corresponding to residues near the C terminal of human smoothed, frizzled family receptor |
| Target Name           | SMO   |
| Other Names           | Gx; SMOH; FZD11   |
| Accession No.         | Swiss-Prot#: Q99835NCBI Gene ID: 6608Gene Accssion: NP_005622   |
| Uniprot               | Q99835  |
| GeneID                | 6608;   |
| Concentration         | 0.7mg/ml  |
| Formulation           | Rabbit IgG in pH7.4 PBS, 0.05% NaN <sub>3</sub> , 40% Glycerol.   |
| Storage               | Store at -20°C  |

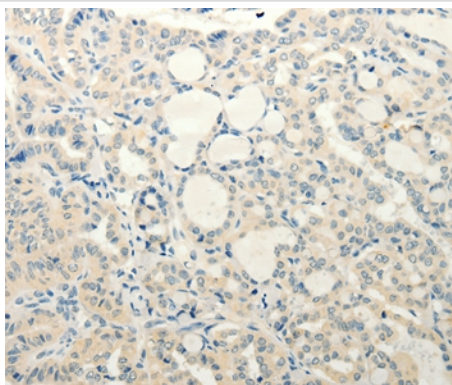
## Application Details

Immunohistochemistry: 1:25-1:100

## Images



Immunohistochemical analysis of paraffin-embedded Human brain tissue using #37295 at dilution 1/20.



Immunohistochemical analysis of paraffin-embedded Human thyroid cancer tissue using #37295 at dilution 1/20.

## Background

The protein encoded by this gene is a G protein-coupled receptor that interacts with the patched protein, a receptor for hedgehog proteins. The encoded protein transduces signals to other proteins after activation by a hedgehog protein/patched protein complex.

Note: This product is for in vitro research use only