

APOBEC2 Antibody

Catalog No: #37337

Orders: order@signalwayantibody.comSupport: tech@signalwayantibody.com

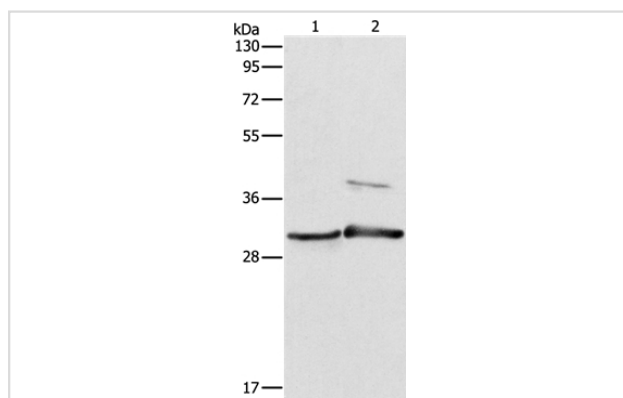
Description

Product Name	APOBEC2 Antibody
Host Species	Rabbit
Clonality	Polyclonal
Purification	Antigen affinity purification.
Applications	WB
Species Reactivity	Hu Ms
Specificity	The antibody detects endogenous levels of total APOBEC2 protein.
Immunogen Type	Peptide
Immunogen Description	Synthetic peptide corresponding to residues near the N terminal of human apolipoprotein B mRNA editing enzyme, catalytic polypeptide-like 2
Target Name	APOBEC2
Other Names	ARP1; ARCD1
Accession No.	Swiss-Prot#: Q9Y235NCBI Gene ID: 10930Gene Accssion: NP_006780
Uniprot	Q9Y235
GeneID	10930;
SDS-PAGE MW	26kd
Concentration	2.7mg/ml
Formulation	Rabbit IgG in pH7.4 PBS, 0.05% NaN ₃ , 40% Glycerol.
Storage	Store at -20°C

Application Details

Western blotting: 1:200-1:1000

Images



Gel: 10%SDS-PAGE

Lysates (from left to right): Mouse muscle and skin tissue

Amount of lysate: 40ug per lane

Primary antibody: 1/450 dilution

Secondary antibody dilution: 1/8000

Exposure time: 10 seconds

Background

Apolipoprotein B mRNA editing enzyme, catalytic polypeptide-like 2 (APOBEC2) is a 224 amino acid protein that belongs to the cytidine and

deoxycytidylate deaminase family. Expressed exclusively in heart and skeletal muscle, APOBEC2 is thought to be a probable C (cytidine) to U (uridine) editing enzyme. However, unlike other members of the family, such as APOBEC1, which mediates the editing of apolipoprotein (apo) B mRNA, APOBEC2 does not display any detectable apoB mRNA editing activity. Also, APOBEC2 has been shown to have low, but definite, intrinsic cytidine deaminase activity.

Note: This product is for in vitro research use only