

## APOBEC3C Antibody

Catalog No: #37338

Orders: [order@signalwayantibody.com](mailto:order@signalwayantibody.com)Support: [tech@signalwayantibody.com](mailto:tech@signalwayantibody.com)

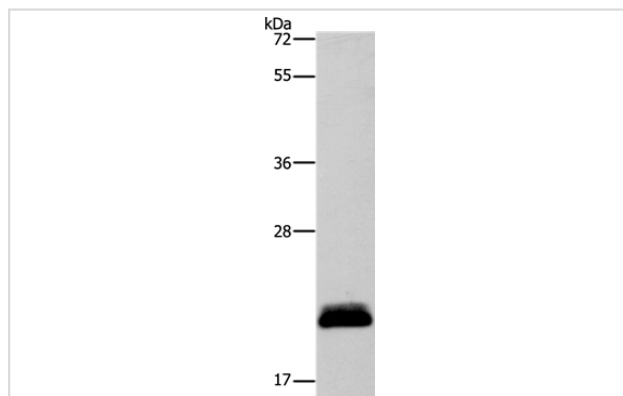
## Description

Product Name	APOBEC3C Antibody
Host Species	Rabbit
Clonality	Polyclonal
Purification	Antigen affinity purification.
Applications	WB
Species Reactivity	Hu
Specificity	The antibody detects endogenous levels of total APOBEC3C protein.
Immunogen Type	Peptide
Immunogen Description	Synthetic peptide corresponding to residues near the C terminal of human apolipoprotein B mRNA editing enzyme, catalytic polypeptide-like 3C
Target Name	APOBEC3C
Other Names	A3C; PBI; ARP5; ARDC2; ARDC4; APOBEC1L; bK150C2.3
Accession No.	Swiss-Prot#: Q9NRW3NCBI Gene ID: 27350Gene Accssion: NP_055323
Uniprot	Q9NRW3
GeneID	27350;
SDS-PAGE MW	23kd
Concentration	1.7mg/ml
Formulation	Rabbit IgG in pH7.4 PBS, 0.05% NaN <sub>3</sub> , 40% Glycerol.
Storage	Store at -20°C

## Application Details

Western blotting: 1:200-1:1000

## Images



Gel: 12%SDS-PAGE  
Lysate: 40ug PC3 cell  
Primary antibody: 1/350 dilution  
Secondary antibody dilution: 1/8000  
Exposure time: 1 minute

## Background

This gene is a member of the cytidine deaminase gene family. It is one of seven related genes or pseudogenes found in a cluster thought to result

from gene duplication, on chromosome 22. Members of the cluster encode proteins that are structurally and functionally related to the C to U RNA-editing cytidine deaminase APOBEC1. It is thought that the proteins may be RNA editing enzymes and have roles in growth or cell cycle control.

---

Note: This product is for in vitro research use only