

APOBEC3D Antibody

Catalog No: #37339

Orders: order@signalwayantibody.comSupport: tech@signalwayantibody.com

Description

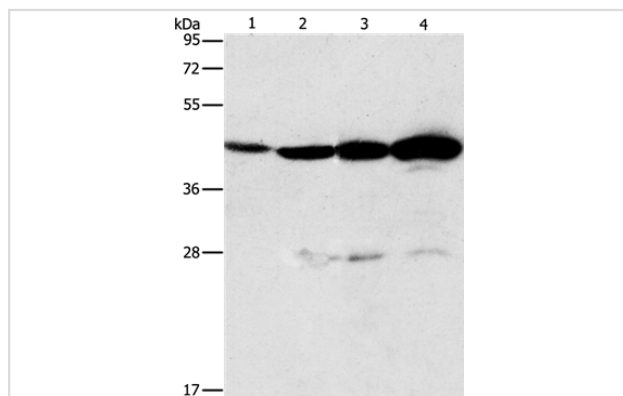
Product Name	APOBEC3D Antibody
Host Species	Rabbit
Clonality	Polyclonal
Purification	Antigen affinity purification.
Applications	WB IHC
Species Reactivity	Hu Ms
Specificity	The antibody detects endogenous levels of total APOBEC3D protein.
Immunogen Type	Peptide
Immunogen Description	Synthetic peptide corresponding to a region derived from internal residues of human apolipoprotein B mRNA editing enzyme, catalytic polypeptide-like 3D
Target Name	APOBEC3D
Other Names	A3D; ARP6; APOBEC3E; APOBEC3DE
Accession No.	Swiss-Prot#: Q6ICH2NCBI Gene ID: 140564Gene Accssion: NP_689639
Uniprot	Q6ICH2
GeneID	140564;
SDS-PAGE MW	47kd
Concentration	2.9mg/ml
Formulation	Rabbit IgG in pH7.4 PBS, 0.05% NaN ₃ , 40% Glycerol.
Storage	Store at -20°C

Application Details

Western blotting: 1:500-1:2000

Immunohistochemistry: 1:50-1:200

Images



Gel: 12%SDS-PAGE

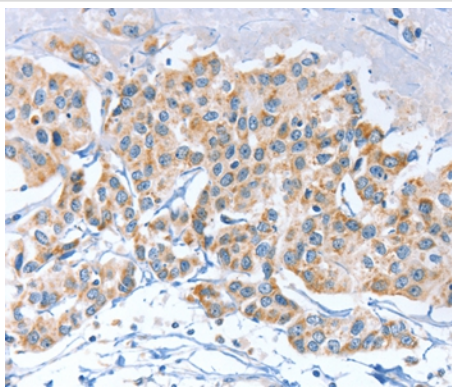
Lysates (from left to right): Mouse thymus tissue and A549 cell, Lovo and K562 cell

Amount of lysate: 40ug per lane

Primary antibody: 1/580 dilution

Secondary antibody dilution: 1/8000

Exposure time: 30 seconds



Immunohistochemical analysis of paraffin-embedded Human breast cancer tissue using #37339 at dilution 1/80.

Background

This gene is a member of the cytidine deaminase gene family. It is one of a group of related genes found in a cluster, thought to result from gene duplication, on chromosome 22. Members of the cluster encode proteins that are structurally and functionally related to the C to U RNA-editing cytidine deaminase APOBEC1 and inhibit retroviruses, such as HIV, by deaminating cytosine residues in nascent retroviral cDNA.

Note: This product is for in vitro research use only