

STOML1 antibody

Catalog No: #22210

Orders: order@signalwayantibody.comSupport: tech@signalwayantibody.com

Description

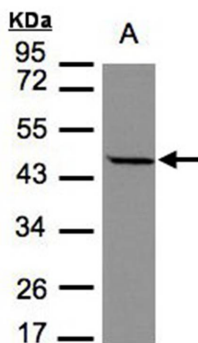
Product Name	STOML1 antibody
Host Species	Rabbit
Clonality	Polyclonal
Purification	Purified by antigen-affinity chromatography.
Applications	WB
Species Reactivity	Hu
Immunogen Type	Recombinant protein
Immunogen Description	Recombinant protein fragment contain a sequence corresponding to a region within amino acids 106 and 338 of Human STOML1
Target Name	STOML1
Other Names	FLJ36370; SLP-1; STORP; hUNC-24
Accession No.	Swiss-Prot:Q9UBI4 Gene ID:9399
Uniprot	Q9UBI4
GeneID	9399;
Concentration	1mg/ml
Formulation	Supplied in 0.1M Tris-buffered saline with 10% Glycerol (pH7.0). 0.01% Thimerosal was added as a preservative.
Storage	Store at -20°C for long term preservation (recommended). Store at 4°C for short term use.

Application Details

Predicted MW: 43kd

Western blotting: 1:500-1:3000

Images



Sample(30 ug of whole cell lysate)
A: MOLT4
7.5% SDS PAGE
Primary antibody diluted at 1: 1000

Note: This product is for in vitro research use only