

AMZ1 Antibody

Catalog No: #37348

Orders: order@signalwayantibody.comSupport: tech@signalwayantibody.com

Description

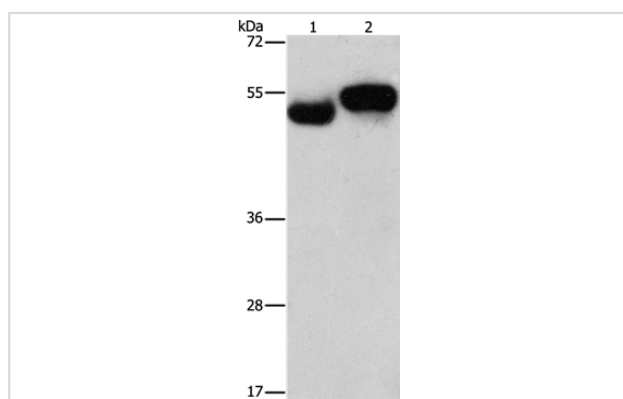
Product Name	AMZ1 Antibody
Host Species	Rabbit
Clonality	Polyclonal
Purification	Antigen affinity purification.
Applications	WB IHC
Species Reactivity	Hu
Specificity	The antibody detects endogenous levels of total AMZ1 protein.
Immunogen Type	Peptide
Immunogen Description	Synthetic peptide corresponding to residues near the C terminal of human archaelysin family metalloproteinase 1
Target Name	AMZ1
Other Names	AMZ1; Archaemetzincin-1; KIAA1950; metalloproteinase-like protein
Accession No.	Swiss-Prot#: Q400G9?NCBI Gene ID: 155185Gene Accssion: NP_597720
Uniprot	Q400G9
GeneID	155185;
SDS-PAGE MW	55kd
Concentration	2.8mg/ml
Formulation	Rabbit IgG in pH7.4 PBS, 0.05% NaN ₃ , 40% Glycerol.
Storage	Store at -20°C

Application Details

Western blotting: 1:500-1:2000

Immunohistochemistry: 1:50-1:200

Images



Gel: 8%SDS-PAGE

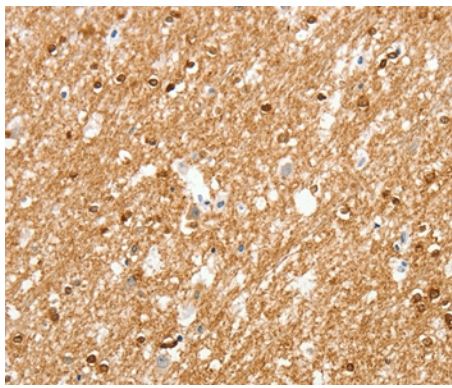
Lysates (from left to right): Human fetal brain and liver tissue

Amount of lysate: 40ug per lane

Primary antibody: 1/1000 dilution

Secondary antibody dilution: 1/8000

Exposure time: 3 minutes



Immunohistochemical analysis of paraffin-embedded Human brain tissue using #37348 at dilution 1/80.

Background

AMZ1 shares sequence similarity with archaeal metalloproteases called archaemetzincins, but it appears to act predominantly as a basic aminopeptidase. Inhibited by the general metalloprotease inhibitors o-phenanthroline and batimastat. Also significantly inhibited by amastatin, which is an inhibitor of aminopeptidases. Not inhibited by 4-(2-aminoethyl)-benzenesulfonyl fluoride, E-64, and TIMPS (tissue inhibitors of metalloproteinases), which are inhibitors of serine, cysteine, and matrix metalloproteases, respectively.

Note: This product is for in vitro research use only