

# GAS2L1 antibody

Catalog No: #22212



Orders: [order@signalwayantibody.com](mailto:order@signalwayantibody.com)  
Support: [tech@signalwayantibody.com](mailto:tech@signalwayantibody.com)

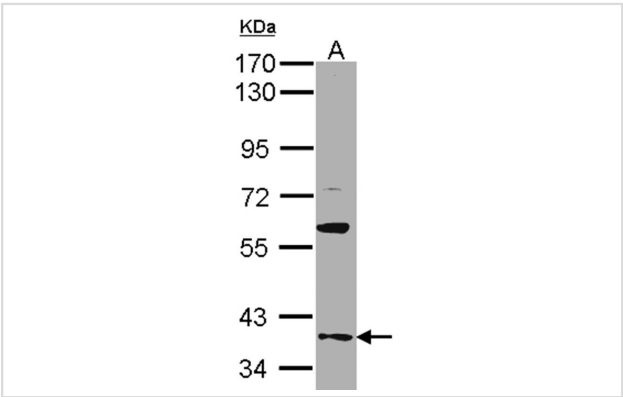
## Description

Product Name	GAS2L1 antibody
Host Species	Rabbit
Clonality	Polyclonal
Purification	Purified by antigen-affinity chromatography.
Applications	WB IHC IF
Species Reactivity	Hu
Immunogen Type	Recombinant protein
Immunogen Description	Recombinant protein fragment contain a sequence corresponding to a region within amino acids 71 and 325 of Human GAS2L1
Target Name	GAS2L1
Accession No.	Swiss-Prot:Q99501Gene ID:10634
Uniprot	Q99501
GeneID	10634;
Concentration	0.8mg/ml
Formulation	Supplied in 0.1M Tris-buffered saline with 10% Glycerol (pH7.0). 0.01% Thimerosal was added as a preservative.
Storage	Store at -20°C for long term preservation (recommended). Store at 4°C for short term use.

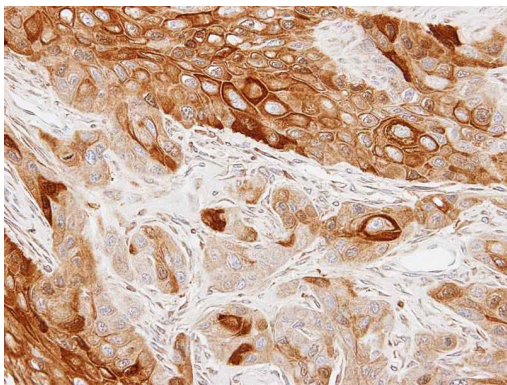
## Application Details

Predicted MW: 73kd  
Western blotting: 1:500-1:3000  
Immunohistochemistry: 1:100-1:250  
Immunofluorescence: 1:100-1:200

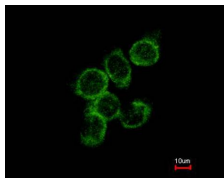
## Images



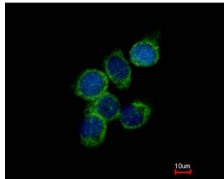
Sample(30 ug of whole cell lysate)  
A: A431  
7.5% SDS PAGE  
Primary antibody diluted at 1: 500



Immunohistochemical analysis of paraffin-embedded SCC4 xenograft, using GAS2L1 antibody at 1: 100 dilution.



Costained with Hoechst 33342



Immunofluorescence analysis of methanol-fixed A431, using GAS2L1 antibody at 1: 500 dilution.

## Background

The protein encoded by this gene, a member of the GAS2 family, is similar in sequence to the mouse protein Gas2, an actin-associated protein expressed at high levels in growth-arrested cells. Expression of the mouse Gas2 gene is negatively regulated by serum and growth factors. Three transcript variants encoding two different isoforms have been found for this gene. [provided by RefSeq]

Note: This product is for in vitro research use only