

## PITX3 Antibody

Catalog No: #37364

Orders: [order@signalwayantibody.com](mailto:order@signalwayantibody.com)Support: [tech@signalwayantibody.com](mailto:tech@signalwayantibody.com)

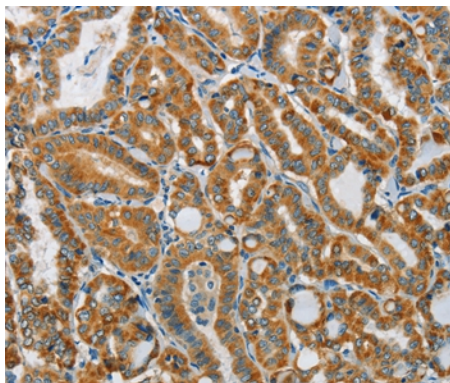
## Description

Product Name	PITX3 Antibody
Host Species	Rabbit
Clonality	Polyclonal
Purification	Antigen affinity purification.
Applications	IHC
Species Reactivity	Hu
Specificity	The antibody detects endogenous levels of total PITX3 protein.
Immunogen Type	Peptide
Immunogen Description	Synthetic peptide corresponding to residues near the N terminal of human paired-like homeodomain 3
Target Name	PITX3
Other Names	PTX3; CTPP4; CTRCT11
Accession No.	Swiss-Prot#: O75364NCBI Gene ID: 5309Gene Accssion: NP_005020
Uniprot	O75364
GeneID	5309;
Concentration	0.6mg/ml
Formulation	Rabbit IgG in pH7.4 PBS, 0.05% NaN <sub>3</sub> , 40% Glycerol.
Storage	Store at -20°C

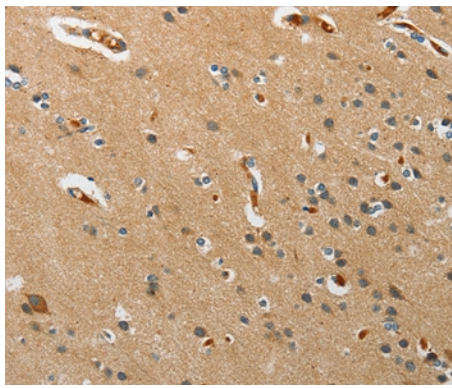
## Application Details

Immunohistochemistry: 1:25-1:100

## Images



Immunohistochemical analysis of paraffin-embedded Human thyroid cancer tissue using #37364 at dilution 1/15.



Immunohistochemical analysis of paraffin-embedded Human brain tissue using #37364 at dilution 1/15.

## Background

This gene encodes a member of the RIEG/PITX homeobox family, which is in the bicoid class of homeodomain proteins. Members of this family act as transcription factors. This protein is involved in lens formation during eye development. Mutations of this gene have been associated with anterior segment mesenchymal dysgenesis and congenital cataracts.

Note: This product is for in vitro research use only