

## AURKC Antibody

Catalog No: #37365

Orders: [order@signalwayantibody.com](mailto:order@signalwayantibody.com)Support: [tech@signalwayantibody.com](mailto:tech@signalwayantibody.com)

## Description

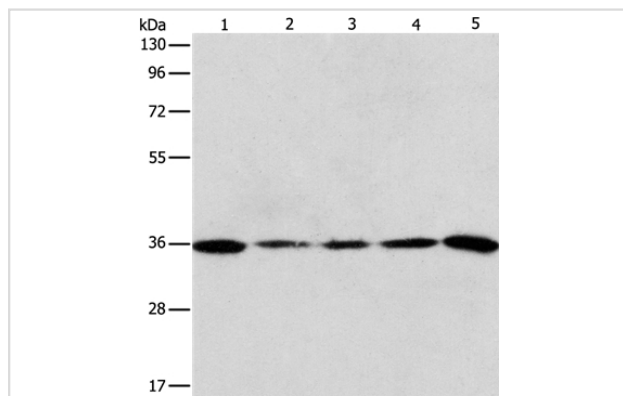
Product Name	AURKC Antibody
Host Species	Rabbit
Clonality	Polyclonal
Purification	Antigen affinity purification.
Applications	WB IHC
Species Reactivity	Hu Ms
Specificity	The antibody detects endogenous levels of total AURKC protein.
Immunogen Type	Peptide
Immunogen Description	Synthetic peptide corresponding to residues near the N terminal of human aurora kinase C
Target Name	AURKC
Other Names	AIE2; AIK3; ARK3; AurC; SPGF5; STK13; aurora-C
Accession No.	Swiss-Prot#: Q9UQB9NCBI Gene ID: 6795Gene Accssion: NP_001015878
Uniprot	Q9UQB9
GeneID	6795;
SDS-PAGE MW	36kd
Concentration	0.5mg/ml
Formulation	Rabbit IgG in pH7.4 PBS, 0.05% NaN <sub>3</sub> , 40% Glycerol.
Storage	Store at -20°C

## Application Details

Western blotting: 1:200-1:1000

Immunohistochemistry: 1:15-1:50

## Images



Gel: 10%SDS-PAGE

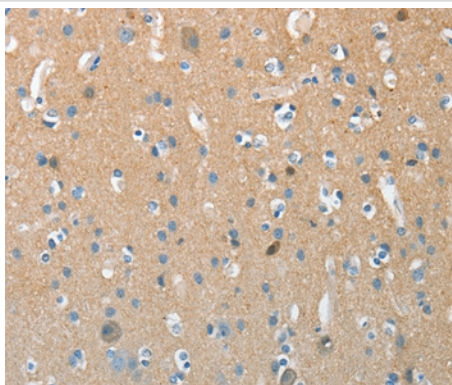
Lysates (from left to right): Mouse testis tissue and hela cell,  
human liver cancer and A375 cell, 293T cell

Amount of lysate: 40ug per lane

Primary antibody: 1/150 dilution

Secondary antibody dilution: 1/8000

Exposure time: 1 minute



Immunohistochemical analysis of paraffin-embedded Human brain tissue using #37365 at dilution 1/15.

## Background

This gene encodes a member of the Aurora subfamily of serine/threonine protein kinases. The encoded protein is a chromosomal passenger protein that forms complexes with Aurora-B and inner centromere proteins and may play a role in organizing microtubules in relation to centrosome/spindle function during mitosis. This gene is overexpressed in several cancer cell lines, suggesting an involvement in oncogenic signal transduction. Alternative splicing results in multiple transcript variants.

Note: This product is for in vitro research use only