

## PFDN6 Antibody

Catalog No: #37367

Orders: [order@signalwayantibody.com](mailto:order@signalwayantibody.com)Support: [tech@signalwayantibody.com](mailto:tech@signalwayantibody.com)

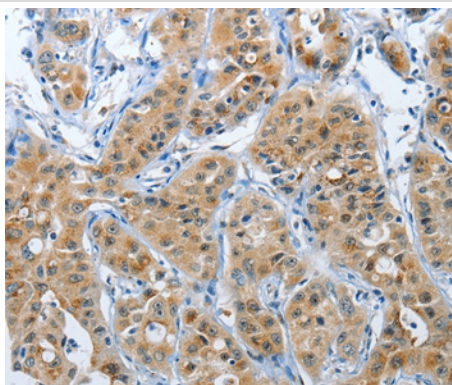
## Description

Product Name	PFDN6 Antibody
Host Species	Rabbit
Clonality	Polyclonal
Purification	Antigen affinity purification.
Applications	IHC
Species Reactivity	Hu Ms
Specificity	The antibody detects endogenous levels of total PFDN6 protein.
Immunogen Type	Peptide
Immunogen Description	Synthetic peptide corresponding to residues near the N terminal of human prefoldin subunit 6
Target Name	PFDN6
Other Names	HKE2; KE-2; PFD6; H2-KE2
Accession No.	Swiss-Prot#: O15212NCBI Gene ID: 10471Gene Accssion: NP_001172110
Uniprot	O15212
GeneID	10471;
Concentration	1.4mg/ml
Formulation	Rabbit IgG in pH7.4 PBS, 0.05% NaN <sub>3</sub> , 40% Glycerol.
Storage	Store at -20°C

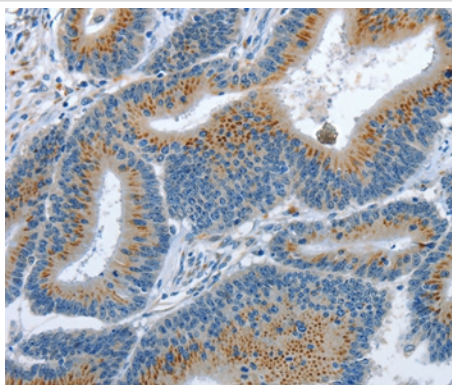
## Application Details

Immunohistochemistry: 1:25-1:100

## Images



Immunohistochemical analysis of paraffin-embedded Human lung cancer tissue using #37367 at dilution 1/35.



Immunohistochemical analysis of paraffin-embedded Human colon cancer tissue using #37367 at dilution 1/35.

## Background

Prefoldin subunit 6 is a protein that in humans is encoded by the PFDN6 gene. PFDN6 binds specifically to cytosolic chaperonin (c-CPN) and transfers target proteins to it. This protein also binds to nascent polypeptide chain and promotes folding in an environment in which there are many competing pathways for nonnative proteins.

Note: This product is for in vitro research use only