

Flotillin-2 antibody

Catalog No: #22214

Orders: order@signalwayantibody.comSupport: tech@signalwayantibody.com

Description

| | |
|-----------------------|--|
| Product Name | Flotillin-2 antibody |
| Host Species | Rabbit |
| Clonality | Polyclonal |
| Purification | Purified by antigen-affinity chromatography. |
| Applications | WB IHC IF |
| Species Reactivity | Hu |
| Immunogen Type | Peptide |
| Immunogen Description | Synthetic peptide contain a sequence corresponding to a region within amino acids 365 and 428 of Flotillin-2 |
| Target Name | Flotillin-2 |
| Accession No. | Swiss-Prot:Q14254 Gene ID:2319 |
| Uniprot | Q14254 |
| GeneID | 2319; |
| Concentration | 1mg/ml |
| Formulation | Supplied in 1XPBS, 1%BSA, 20% Glycerol (pH7.0). 0.01% Thimerosal was added as a preservative. |
| Storage | Store at -20°C for long term preservation (recommended). Store at 4°C for short term use. |

Application Details

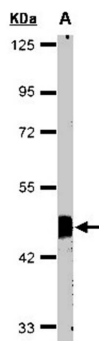
Predicted MW: 47kd

Western blotting: 1:500-1:3000

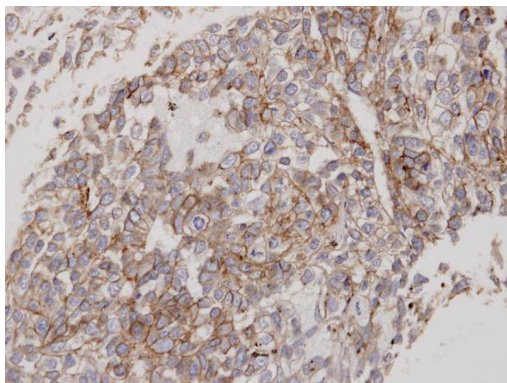
Immunohistochemistry: 1:100-1:250

Immunofluorescence: 1:100-1:200

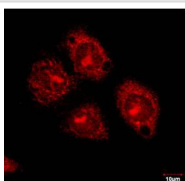
Images



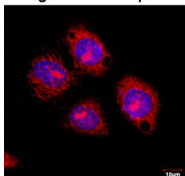
Sample(30 ug of whole cell lysate)
A: HeLa S3
10% SDS PAGE
Primary antibody diluted at 1: 1000



Immunohistochemical analysis of paraffin-embedded Lung CA, using Flotillin-2 antibody at 1: 100 dilution.



Merged with DNA probe



Immunofluorescence analysis of paraformaldehyde-fixed HeLaS3, using Flotillin-2 antibody at 1: 100 dilution.

Background

Caveolae are small domains on the inner cell membrane involved in vesicular trafficking and signal transduction. This gene encodes a caveolae-associated, integral membrane protein, which is thought to function in neuronal signaling. [provided by RefSeq]

Note: This product is for in vitro research use only