

APOL6 Antibody

Catalog No: #37425

Orders: order@signalwayantibody.comSupport: tech@signalwayantibody.com

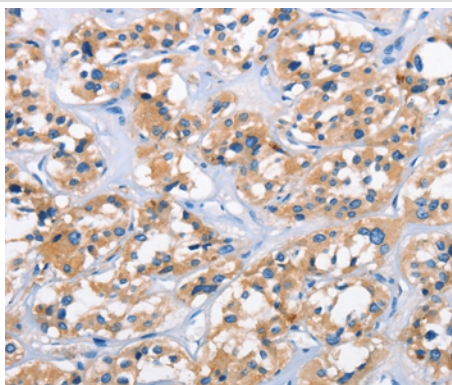
Description

| | |
|-----------------------|---|
| Product Name | APOL6 Antibody |
| Host Species | Rabbit |
| Clonality | Polyclonal |
| Purification | Antigen affinity purification. |
| Applications | IHC |
| Species Reactivity | Hu |
| Specificity | The antibody detects endogenous levels of total APOL6 protein. |
| Immunogen Type | Peptide |
| Immunogen Description | Synthetic peptide corresponding to a region derived from internal residues of human apolipoprotein L, 6 |
| Target Name | APOL6 |
| Other Names | APOLVI; APOL-VI |
| Accession No. | Swiss-Prot#: Q9BWW8NCBI Gene ID: 80830Gene Accssion: NP_085144 |
| Uniprot | Q9BWW8 |
| GeneID | 80830; |
| Concentration | 2.2mg/ml |
| Formulation | Rabbit IgG in pH7.4 PBS, 0.05% NaN ₃ , 40% Glycerol. |
| Storage | Store at -20°C |

Application Details

Immunohistochemistry: 1:25-1:200

Images



Immunohistochemical analysis of paraffin-embedded Human thyroid cancer tissue using #37425 at dilution 1/50.

Background

This gene is a member of the apolipoprotein L gene family. The encoded protein is found in the cytoplasm, where it may affect the movement of lipids or allow the binding of lipids to organelles. Widely expressed; highly expressed in the uterus, fetal brain and spinal cord, also detected in heart, liver, lung, colon, spleen, thymus, prostate, placenta, adrenal gland, salivary and mammary gland.

Note: This product is for in vitro research use only