

GTF2I Antibody

Catalog No: #37440



Orders: order@signalwayantibody.com
Support: tech@signalwayantibody.com

Description

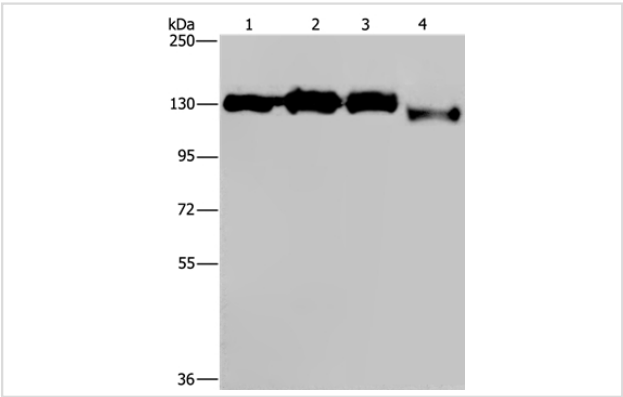
Product Name	GTF2I Antibody
Host Species	Rabbit
Clonality	Polyclonal
Purification	Antigen affinity purification.
Applications	WB IHC
Species Reactivity	Hu Ms Rt
Specificity	The antibody detects endogenous levels of total GTF2I protein.
Immunogen Type	Peptide
Immunogen Description	Synthetic peptide corresponding to residues near the C terminal of human general transcription factor Ili
Target Name	GTF2I
Other Names	WBS; DIWS; SPIN; IB291; BAP135; BTKAP1; TFII-I; WBSR6; GTFII-I
Accession No.	Swiss-Prot#: P78347NCBI Gene ID: 2969Gene Accssion: NP_127492/P78347
Uniprot	P78347
GeneID	2969;
SDS-PAGE MW	112kd
Concentration	2.6mg/ml
Formulation	Rabbit IgG in pH7.4 PBS, 0.05% NaN3, 40% Glycerol.
Storage	Store at -20°C

Application Details

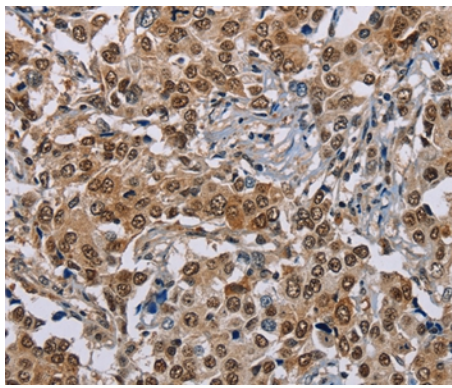
Western blotting: 1:500-1:2000

Immunohistochemistry: 1:50-1:200

Images



Gel: 6%SDS-PAGE
Lysates (from left to right): Hela, 293T, Raji and 231 cell
Amount of lysate: 40ug per lane
Primary antibody: 1/400 dilution
Secondary antibody dilution: 1/8000
Exposure time: 10 seconds



Immunohistochemical analysis of paraffin-embedded Human liver cancer tissue using #37440 at dilution 1/40.

Background

This gene encodes a phosphoprotein containing six characteristic repeat motifs. The encoded protein binds to the initiator element (Inr) and E-box element in promoters and functions as a regulator of transcription. This locus, along with several other neighboring genes, is deleted in Williams-Beuren syndrome. There are many closely related genes and pseudogenes for this gene on chromosome 7. This gene also has pseudogenes on chromosomes 9, 13, and 21. Alternatively spliced transcript variants encoding multiple isoforms have been observed.

Note: This product is for in vitro research use only