

## CEL Antibody

Catalog No: #37441

Orders: [order@signalwayantibody.com](mailto:order@signalwayantibody.com)Support: [tech@signalwayantibody.com](mailto:tech@signalwayantibody.com)

## Description

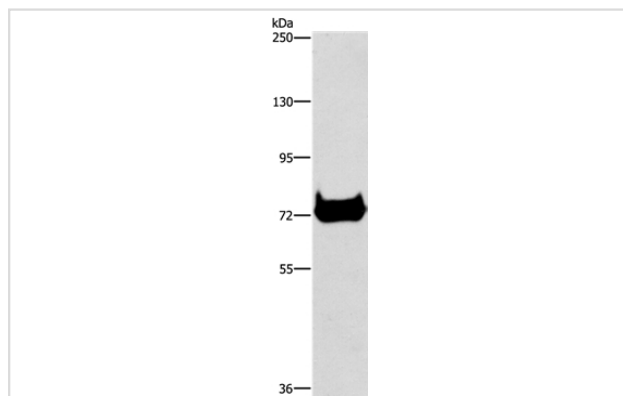
Product Name	CEL Antibody
Host Species	Rabbit
Clonality	Polyclonal
Purification	Antigen affinity purification.
Applications	WB IHC
Species Reactivity	Hu Ms
Specificity	The antibody detects endogenous levels of total CEL protein.
Immunogen Type	Peptide
Immunogen Description	Synthetic peptide corresponding to residues near the C terminal of human carboxyl ester lipase
Target Name	CEL
Other Names	BAL; FAP; BSDL; BSSL; CELL; FAPP; LIPA; CEase; MODY8
Accession No.	Swiss-Prot#: P19835NCBI Gene ID: 1056Gene Accssion: NP_001798
Uniprot	P19835
GeneID	1056;
SDS-PAGE MW	79kd
Concentration	1.9mg/ml
Formulation	Rabbit IgG in pH7.4 PBS, 0.05% NaN <sub>3</sub> , 40% Glycerol.
Storage	Store at -20°C

## Application Details

Western blotting: 1:500-1:2000

Immunohistochemistry: 1:50-1:200

## Images



Gel: 6%SDS-PAGE

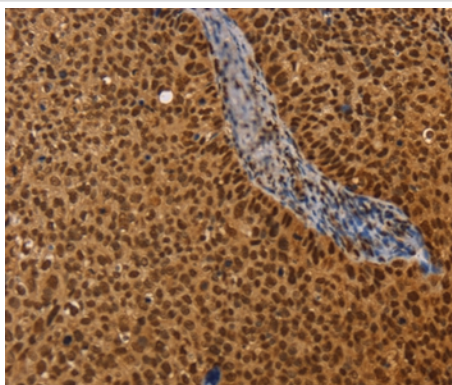
Lysates (from left to right): Mouse pancreas tissue

Amount of lysate: 40ug per lane

Primary antibody: 1/500 dilution

Secondary antibody dilution: 1/8000

Exposure time: 20 seconds



Immunohistochemical analysis of paraffin-embedded Human cervical cancer tissue using #37441 at dilution 1/40.

## Background

The protein encoded by this gene is a glycoprotein secreted from the pancreas into the digestive tract and from the lactating mammary gland into human milk. The physiological role of this protein is in cholesterol and lipid-soluble vitamin ester hydrolysis and absorption. This encoded protein promotes large chylomicron production in the intestine. Also its presence in plasma suggests its interactions with cholesterol and oxidized lipoproteins to modulate the progression of atherosclerosis. In pancreatic tumoral cells, this encoded protein is thought to be sequestered within the Golgi compartment and is probably not secreted.

Note: This product is for in vitro research use only