

BOD1 Antibody

Catalog No: #37445

Orders: order@signalwayantibody.comSupport: tech@signalwayantibody.com

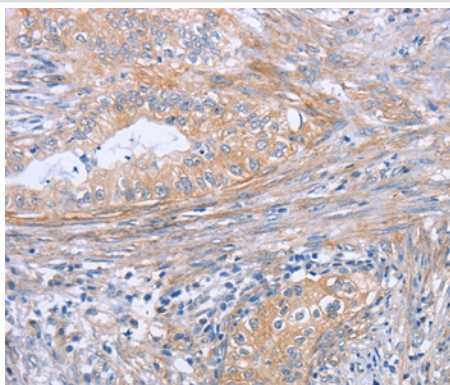
Description

Product Name	BOD1 Antibody
Host Species	Rabbit
Clonality	Polyclonal
Purification	Antigen affinity purification.
Applications	IHC
Species Reactivity	Hu
Specificity	The antibody detects endogenous levels of total BOD1 protein.
Immunogen Type	Peptide
Immunogen Description	Synthetic peptide corresponding to residues near the C terminal of human biorientation of chromosomes in cell division 1
Target Name	BOD1
Other Names	FAM44B
Accession No.	Swiss-Prot#: Q96IK1NCBI Gene ID: 91272Gene Accssion: NP_001153123
Uniprot	Q96IK1
GeneID	91272;
Concentration	1.6mg/ml
Formulation	Rabbit IgG in pH7.4 PBS, 0.05% NaN ₃ , 40% Glycerol.
Storage	Store at -20°C

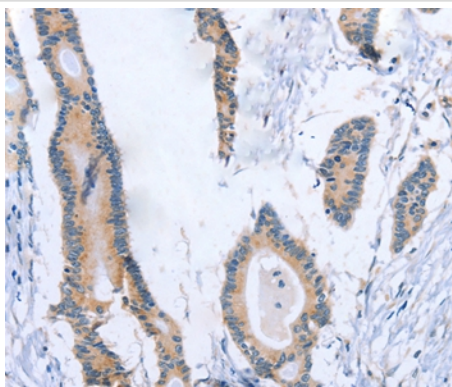
Application Details

Immunohistochemistry: 1:25-1:100

Images



Immunohistochemical analysis of paraffin-embedded Human cervical cancer tissue using #37445 at dilution 1/30.



Immunohistochemical analysis of paraffin-embedded Human colon cancer tissue using #37445 at dilution 1/30.

Background

Bod1, a protein conserved throughout metazoans that associates with a large macromolecular complex and localizes with kinetochores and spindle poles during mitosis. Bod1-depleted cells form syntelic attachments that can oscillate and generate enough force to separate sister kinetochores, suggesting that microtubule-kinetochore interactions were intact. Releasing Bod1-depleted cells from a monastrol block increases the frequency of syntelic attachments and the number of cells displaying biorientation defects.

Note: This product is for in vitro research use only