

CAPZA1 Antibody

Catalog No: #37459

Orders: order@signalwayantibody.comSupport: tech@signalwayantibody.com

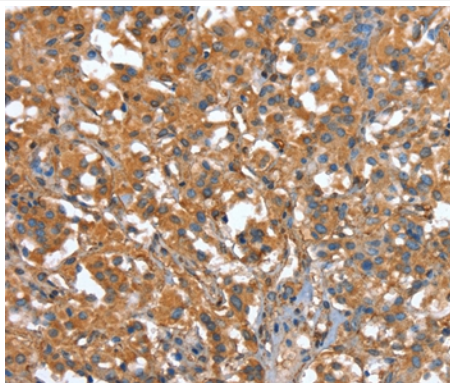
Description

Product Name	CAPZA1 Antibody
Host Species	Rabbit
Clonality	Polyclonal
Purification	Antigen affinity purification.
Applications	IHC
Species Reactivity	Hu
Specificity	The antibody detects endogenous levels of total CAPZA1 protein.
Immunogen Type	Peptide
Immunogen Description	Synthetic peptide corresponding to a region derived from internal residues of human capping protein (actin filament) muscle Z-line, alpha 1
Target Name	CAPZA1
Other Names	CAPZ; CAZ1; CAPPA1
Accession No.	Swiss-Prot#: P52907NCBI Gene ID: 829Gene Accssion: NP_006126
Uniprot	P52907
GeneID	829;
Concentration	2.2mg/ml
Formulation	Rabbit IgG in pH7.4 PBS, 0.05% NaN ₃ , 40% Glycerol.
Storage	Store at -20°C

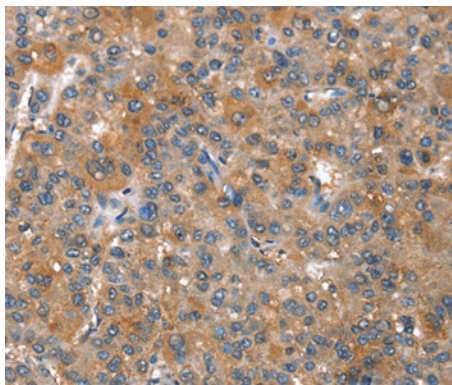
Application Details

Immunohistochemistry: 1:25-1:100

Images



Immunohistochemical analysis of paraffin-embedded Human thyroid cancer tissue using #37459 at dilution 1/25.



Immunohistochemical analysis of paraffin-embedded Human liver cancer tissue using #37459 at dilution 1/25.

Background

CAPZA1 is a member of the F-actin capping protein alpha subunit family. This gene encodes the alpha subunit of the barbed-end actin binding protein. The protein regulates growth of the actin filament by capping the barbed end of growing actin filaments. F-actin-capping proteins bind in a Ca^{2+} -independent manner to the fast growing ends of actin filaments (barbed end) thereby blocking the exchange of subunits at these ends. Unlike other capping proteins (such as gelsolin and severin), these proteins do not sever actin filaments.

Note: This product is for in vitro research use only