

STK3/STK4 Antibody

Catalog No: #37462

Orders: order@signalwayantibody.comSupport: tech@signalwayantibody.com

Description

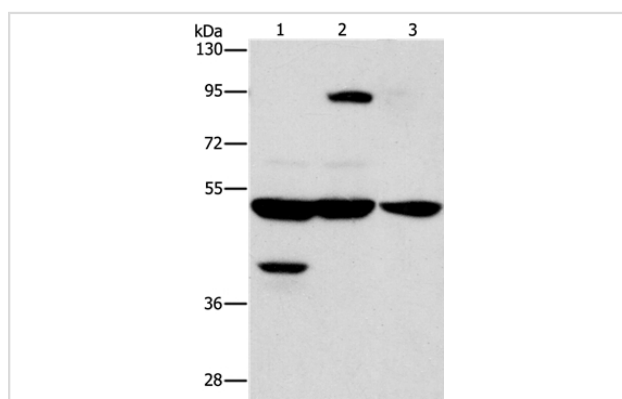
Product Name	STK3/STK4 Antibody
Host Species	Rabbit
Clonality	Polyclonal
Purification	Antigen affinity purification.
Applications	WB IHC
Species Reactivity	Hu Ms
Specificity	The antibody detects endogenous levels of total STK3/STK4 protein.
Immunogen Type	Peptide
Immunogen Description	Synthetic peptide corresponding to a region derived from internal residues of human serine threonine kinase 3/4
Target Name	STK3-STK4
Other Names	KRS1; MST2/KRS2; MST1; YSK3; TIAC
Accession No.	Swiss-Prot#: Q13043NCBI Gene ID: 6789Gene Accssion: NP_006273
Uniprot	Q13043
GeneID	6789;
SDS-PAGE MW	56kd
Concentration	3mg/ml
Formulation	Rabbit IgG in pH7.4 PBS, 0.05% NaN ₃ , 40% Glycerol.
Storage	Store at -20°C

Application Details

Western blotting: 1:500-1:2000

Immunohistochemistry: 1:50-1:200

Images



Gel: 6%SDS-PAGE

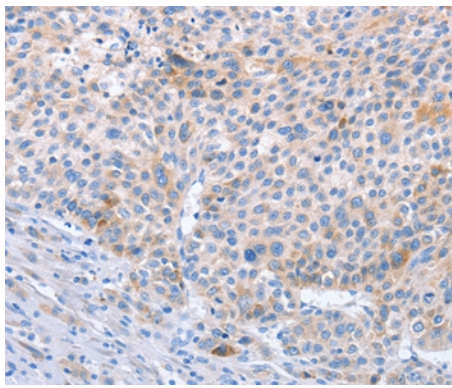
Lysates (from left to right): Human bladder carcinoma tissue and A172 cell, human brain malignant glioma tissue

Amount of lysate: 40ug per lane

Primary antibody: 1/1000 dilution

Secondary antibody dilution: 1/8000

Exposure time: 10 seconds



Immunohistochemical analysis of paraffin-embedded Human colon cancer tissue using #37462 at dilution 1/70.

Background

Sterile-20 (Ste20) is a serine/threonine kinase in *Saccharomyces cerevisiae* that is involved in relaying signals from G protein-coupled receptors to cyto-solic MAP kinase cascades. Mammalian protein kinases that display sequence similarity to Ste20 are divided into two groups, the PAK subfamily and the GCK subfamily. The mammalian Ste20-like kinases (MST kinases), also known as Krs proteins, are members of the GCK subfamily. Ksr-1 (MST-2) and Ksr-2 (MST-1) are both direct substrates of caspase-3 that accelerate caspase-3 activation.

Note: This product is for in vitro research use only