

CCL23 Antibody

Catalog No: #37465

Orders: order@signalwayantibody.comSupport: tech@signalwayantibody.com

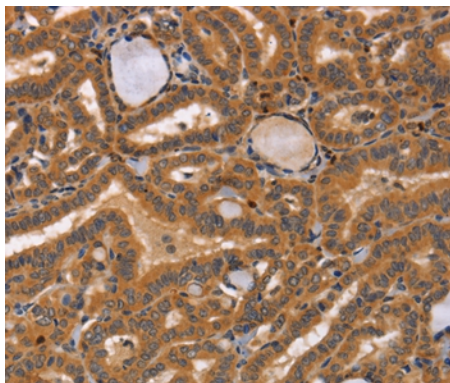
Description

Product Name	CCL23 Antibody
Host Species	Rabbit
Clonality	Polyclonal
Purification	Antigen affinity purification.
Applications	IHC
Species Reactivity	Hu
Specificity	The antibody detects endogenous levels of total CCL23 protein.
Immunogen Type	Peptide
Immunogen Description	Synthetic peptide corresponding to residues near the C terminal of human chemokine (C-C motif) ligand 23
Target Name	CCL23
Other Names	CKb8; MIP3; Ckb-8; MIP-3; MPIF-1; SCYA23; Ckb-8-1; hmrb-2a; CK-BETA-8
Accession No.	Swiss-Prot#: P55773NCBI Gene ID: 6368Gene Accssion: NP_005055
Uniprot	P55773
GeneID	6368;
Concentration	2.5mg/ml
Formulation	Rabbit IgG in pH7.4 PBS, 0.05% NaN ₃ , 40% Glycerol.
Storage	Store at -20°C

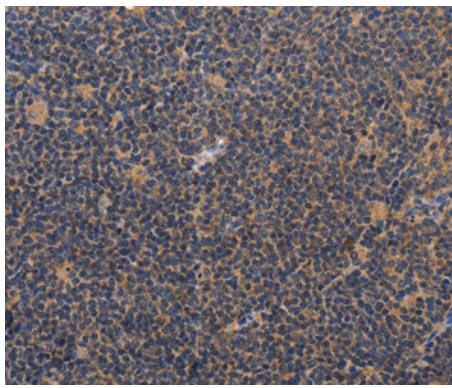
Application Details

Immunohistochemistry: 1:50-1:200

Images



Immunohistochemical analysis of paraffin-embedded Human thyroid cancer tissue using #37465 at dilution 1/50.



Immunohistochemical analysis of paraffin-embedded Human lymphoma tissue using #37465 at dilution 1/50.

Background

This gene is one of several chemokine genes clustered on the q-arm of chromosome 17. Chemokines form a superfamily of secreted proteins involved in immunoregulatory and inflammatory processes. The superfamily is divided into four subfamilies based on the arrangement of the N-terminal cysteine residues of the mature peptide. This chemokine, a member of the CC subfamily, displays chemotactic activity on resting T lymphocytes and monocytes, lower activity on neutrophils and no activity on activated T lymphocytes. The protein is also a strong suppressor of colony formation by a multipotential hematopoietic progenitor cell line.?

Note: This product is for in vitro research use only