

CD2AP Antibody

Catalog No: #37468

Orders: order@signalwayantibody.comSupport: tech@signalwayantibody.com

Description

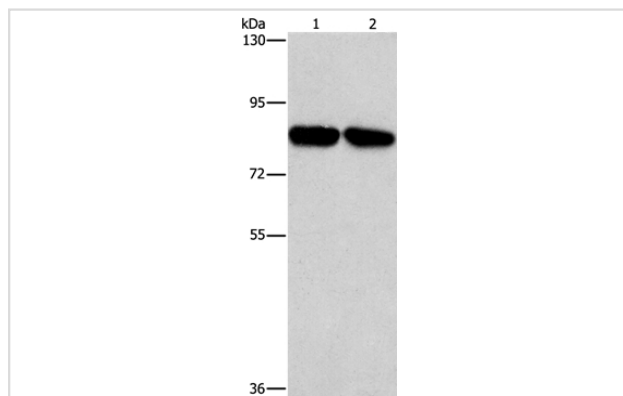
Product Name	CD2AP Antibody
Host Species	Rabbit
Clonality	Polyclonal
Purification	Antigen affinity purification.
Applications	WB IHC
Species Reactivity	Hu
Specificity	The antibody detects endogenous levels of total CD2AP protein.
Immunogen Type	Peptide
Immunogen Description	Synthetic peptide corresponding to a region derived from internal residues of human CD2-associated protein
Target Name	CD2AP
Other Names	CMS
Accession No.	Swiss-Prot#: Q9Y5K6NCBI Gene ID: 23607Gene Accssion: NP_036252
Uniprot	Q9Y5K6
GeneID	23607;
SDS-PAGE MW	71kd
Concentration	3mg/ml
Formulation	Rabbit IgG in pH7.4 PBS, 0.05% NaN ₃ , 40% Glycerol.
Storage	Store at -20°C

Application Details

Western blotting: 1:1000-1:5000

Immunohistochemistry: 1:100-1:300

Images



Gel: 6%SDS-PAGE

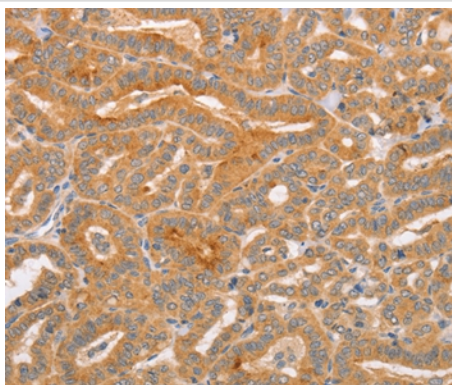
Lysates (from left to right): A431 and Raji cell

Amount of lysate: 40ug per lane

Primary antibody: 1/1000 dilution

Secondary antibody dilution: 1/8000

Exposure time: 1 second



Immunohistochemical analysis of paraffin-embedded Human thyroid cancer tissue using #37468 at dilution 1/70.

Background

This gene encodes a scaffolding molecule that regulates the actin cytoskeleton. The protein directly interacts with filamentous actin and a variety of cell membrane proteins through multiple actin binding sites, SH3 domains, and a proline-rich region containing binding sites for SH3 domains. The cytoplasmic protein localizes to membrane ruffles, lipid rafts, and the leading edges of cells. It is implicated in dynamic actin remodeling and membrane trafficking that occurs during receptor endocytosis and cytokinesis. Haploinsufficiency of this gene is implicated in susceptibility to glomerular disease.

Note: This product is for in vitro research use only