

NCR1 Antibody

Catalog No: #37471

Orders: order@signalwayantibody.comSupport: tech@signalwayantibody.com

Description

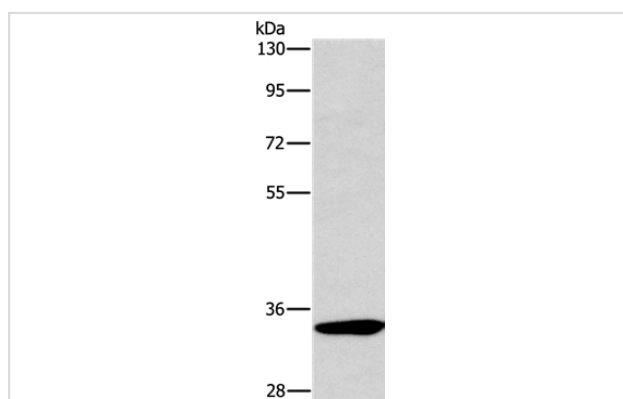
Product Name	NCR1 Antibody
Host Species	Rabbit
Clonality	Polyclonal
Purification	Antigen affinity purification.
Applications	WB IHC
Species Reactivity	Hu
Specificity	The antibody detects endogenous levels of total NCR1 protein.
Immunogen Type	Peptide
Immunogen Description	Synthetic peptide corresponding to residues near the C terminal of human natural cytotoxicity triggering receptor 1
Target Name	NCR1
Other Names	LY94; CD335; NKP46; NK-p46
Accession No.	Swiss-Prot#: O76036NCBI Gene ID: 9437Gene Accssion: NP_001138929
Uniprot	O76036
GeneID	9437;
SDS-PAGE MW	34kd
Concentration	1.4mg/ml
Formulation	Rabbit IgG in pH7.4 PBS, 0.05% NaN ₃ , 40% Glycerol.
Storage	Store at -20°C

Application Details

Western blotting: 1:200-1:1000

Immunohistochemistry: 1:25-1:100

Images



Gel: 8%SDS-PAGE

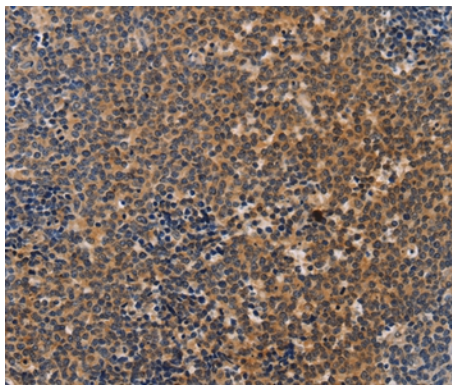
Lysates (from left to right): Mouse kidney tissue

Amount of lysate: 40ug per lane

Primary antibody: 1/450 dilution

Secondary antibody dilution: 1/8000

Exposure time: 1 minute



Immunohistochemical analysis of paraffin-embedded Human lymphoma tissue using #37471 at dilution 1/20.

Background

Natural cytotoxicity triggering receptor 1 is a protein that in humans is encoded by the *NCR1* gene. *NCR1* has also been designated as *CD335* (cluster of differentiation 335). Cytotoxicity-activating receptor that may contribute to the increased efficiency of activated natural killer (NK) cells to mediate tumor cell lysis. Interacts with CD247 and FCER1G. Selectively expressed by both resting and activated NK cells.

Note: This product is for in vitro research use only