

CHRD2 Antibody

Catalog No: #37486



Orders: [order@signalwayantibody.com](mailto:order@signalwayantibody.com)  
Support: [tech@signalwayantibody.com](mailto:tech@signalwayantibody.com)

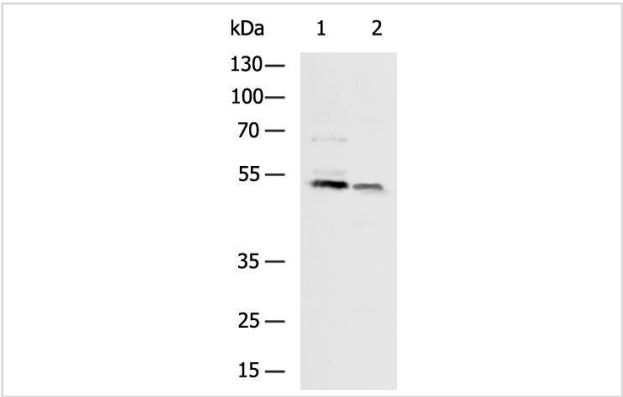
Description

Product Name	CHRD2 Antibody
Host Species	Rabbit
Clonality	Polyclonal
Purification	Antigen affinity purification.
Applications	WB IHC
Species Reactivity	Human Mouse
Specificity	The antibody detects endogenous levels of total CHRD2 protein.
Immunogen Type	Peptide
Immunogen Description	Synthetic peptide of human CHRD2
Target Name	CHRD2
Other Names	BNF1; CHL2; FKSG37
Accession No.	Swiss-Prot#: Q6WN34NCBI Gene ID: 25884Gene Accssion: NP_056239
Uniprot	Q6WN34
GeneID	25884;
SDS-PAGE MW	48kd
Concentration	1.0 mg/ml
Formulation	Rabbit IgG in pH7.4 PBS, 0.05% NaN3, 40% Glycerol.
Storage	Store at -20°C

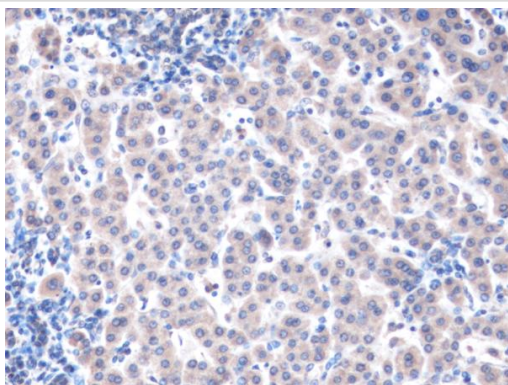
Application Details

WB 1:500-5000  
IHC 1:50-200

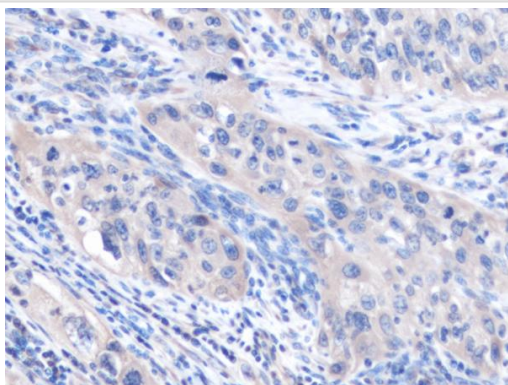
Images



Gel: 8%SDS-PAGE  
Lysate: 10 ug  
Lane 1-2: Mouse brain tissue, Mouse heart tissue lysates  
Primary antibody: (CHRD2 Antibody) at dilution 1/800  
Secondary antibody: (HRP-conjugated Goat anti rabbit IgG) at 1/10000 dilution  
Exposure time: 3 seconds



The image is immunohistochemistry of paraffin-embedded Human liver cancer tissue using (CHRDL2 Antibody) at dilution 1/50.



The image is immunohistochemistry of paraffin-embedded Human cervical cancer tissue using (CHRDL2 Antibody) at dilution 1/50.

## Background

CHRDL2 (chordin-related protein 2), also known as BNF1 (breast tumor novel factor 1) or CHL2 (chordin-like 2), is a 429 amino acid protein that belongs to the chordin family of proteins. CHRDL2 contains three VWFC (von Willebrand Factor type C) domains and is predominantly expressed in uterus and moderately expressed in prostate, liver, ovary, heart and testis. Due to alternative splicing events, CHRDL2 exists as five isoforms, namely isoform I, isoform II, isoform VII, isoform VIII and isoform IX. Two of these isoforms are secreted, while the other three localize to the cytoplasm. Functioning as a BMP-binding inhibitor, CHRDL2 directly interacts with BMPs and blocks their binding to BMP receptors, thereby inhibiting BMP activity. In breast, lung and colon tumors, CHRDL2 expression is upregulated, suggesting a possible role in tumorigenesis.

Note: This product is for in vitro research use only