

CIB1 Antibody

Catalog No: #37488

Orders: order@signalwayantibody.comSupport: tech@signalwayantibody.com

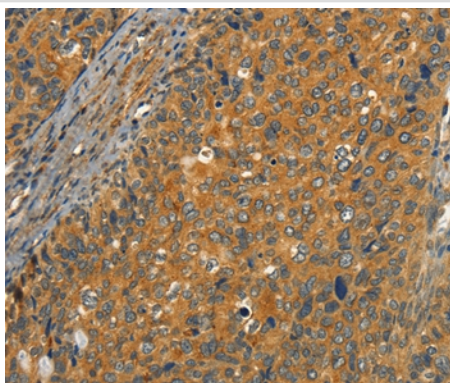
Description

Product Name	CIB1 Antibody
Host Species	Rabbit
Clonality	Polyclonal
Purification	Antigen affinity purification.
Applications	IHC
Species Reactivity	Hu Ms Rt
Specificity	The antibody detects endogenous levels of total CIB1 protein.
Immunogen Type	Peptide
Immunogen Description	Synthetic peptide corresponding to a region derived from internal residues of human calcium and integrin binding 1 (calmyrin)
Target Name	CIB1
Other Names	CIB; CIBP; KIP1; PRKDCIP; SIP2-28
Accession No.	Swiss-Prot#: Q99828NCBI Gene ID: 10519Gene Accssion: NP_006375
Uniprot	Q99828
GeneID	10519;
Concentration	1.5mg/ml
Formulation	Rabbit IgG in pH7.4 PBS, 0.05% NaN ₃ , 40% Glycerol.
Storage	Store at -20°C

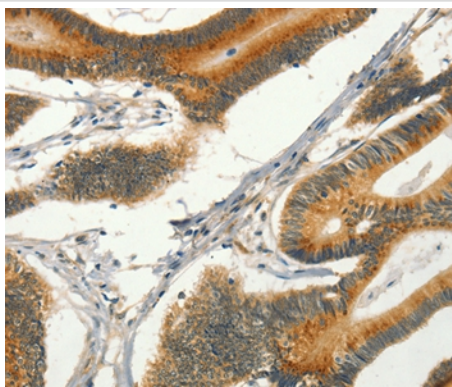
Application Details

Immunohistochemistry: 1:50-1:200

Images



Immunohistochemical analysis of paraffin-embedded Human cervical cancer tissue using #37488 at dilution 1/40.



Immunohistochemical analysis of paraffin-embedded Human colon cancer tissue using #37488 at dilution 1/40.

Background

This gene encodes a member of the EF-hand domain-containing calcium-binding superfamily. The encoded protein interacts with many other proteins, including the platelet integrin alpha-IIb-beta-3, DNA-dependent protein kinase, presenilin-2, focal adhesion kinase, p21 activated kinase, and protein kinase D. The encoded protein may be involved in cell survival and proliferation, and is associated with several disease states including cancer and Alzheimer's disease. Alternative splicing results in multiple transcript variants.

Note: This product is for in vitro research use only