

CLPTM1L Antibody

Catalog No: #37492

Orders: order@signalwayantibody.comSupport: tech@signalwayantibody.com

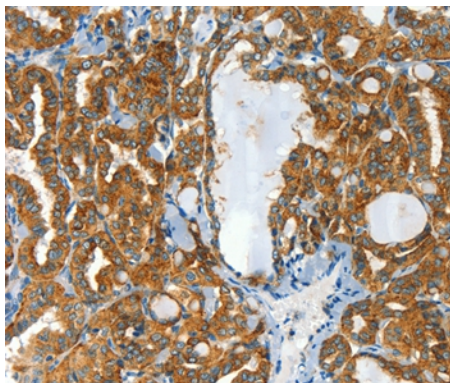
Description

Product Name	CLPTM1L Antibody
Host Species	Rabbit
Clonality	Polyclonal
Purification	Antigen affinity purification.
Applications	IHC
Species Reactivity	Hu
Specificity	The antibody detects endogenous levels of total CLPTM1L protein.
Immunogen Type	Peptide
Immunogen Description	Synthetic peptide corresponding to a region derived from internal residues of human CLPTM1-like
Target Name	CLPTM1L
Other Names	CRR9
Accession No.	Swiss-Prot#: Q96KA5NCBI Gene ID: 81037Gene Accssion: NP_110409
Uniprot	Q96KA5
GeneID	81037;
Concentration	2.6mg/ml
Formulation	Rabbit IgG in pH7.4 PBS, 0.05% NaN ₃ , 40% Glycerol.
Storage	Store at -20°C

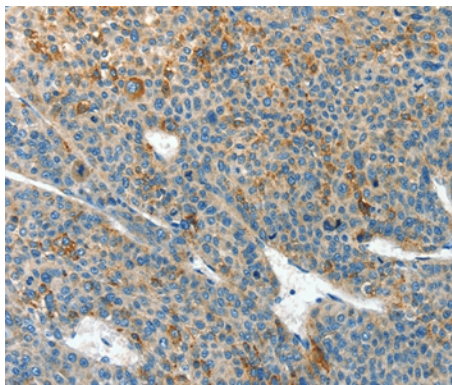
Application Details

Immunohistochemistry: 1:50-1:200

Images



Immunohistochemical analysis of paraffin-embedded Human thyroid cancer tissue using #37492 at dilution 1/60.



Immunohistochemical analysis of paraffin-embedded Human liver cancer tissue using #37492 at dilution 1/60.

Background

Cleft lip and palate transmembrane protein 1-like protein (CLPTM1-like protein), also known as cisplatin resistance-related protein 9 (CRR9p), is a protein that in humans is encoded by the CLPTM1L gene. CRR9p is associated with cisplatin-induced apoptosis. CLPTM1L, which lies within a cancer susceptibility locus on chromosome 5 (5p15.33), has been found to be commonly over-expressed in lung tumors and to confer resistance to apoptosis caused by genotoxic agents in association with up-regulation of the anti-apoptotic protein, Bcl-xL.

Note: This product is for in vitro research use only